



NATO Communications and Information Agency
Agence OTAN d'information et de communication

ERROR CREATING ROUTES IN LOGFAS 7.0

Last updated: 04-May-2022

Applies to: LOGFAS 7.0

TABLE OF CONTENTS

Table of contents	2
1 Issue	3
1.1 Description	3
1.2 Cause of the issue	3
2 Workaround	3

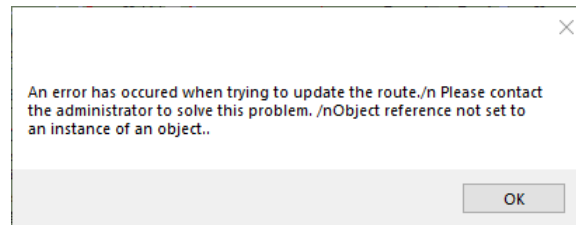
Document change log			
Version	Comments	Date	Author
1.0	Initial version	04-May-22	Marius Rofel

ERROR CREATING ROUTES IN LOGFAS 7.0

1 ISSUE

1.1 Description

When using GEOMAN, ADAMS or CORSOM in LOGFAS 7.0 to create a Route, the following error may appear:



In this case, Routes cannot be created for any Transportation Network, regardless of the Mode of Transportation (MOT), unless the workaround further described in this document is applied.

1.2 Cause of the issue

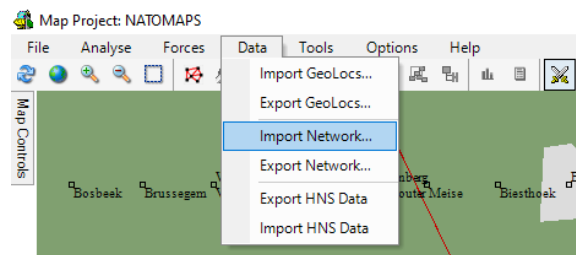
This happens only when creating the first route in LOGFAS 7.0 databases, so if no Route exists in any Transportation Network in the database, e.g. *LOGFAS_logbase* or new databases.

The issue has been fixed in LOGFAS 7.1.0 (Bug 69380), planned to be released in June 2022.

2 WORKAROUND

Routes can be created in LOGFAS 7.0 databases only if Route(s) already exists in any Transportation Network of any MOT. Therefore, the workaround is to use GEOMAN or CORSOM to **import an XML file with data for a Transportation Network with Route(s)**.

The example below depicts the applicable import main menu for GEOMAN.



An example XML file is embedded below in this document, with data for a Road Transportation Network named *1st Route*, with a Route named *1st Route*.



1st Route Network
File.xml

NOTE: The file should be open with Acrobat Reader and is best accessed from the desktop application and NOT in web browser.

After importing the above XML file and creating a Route for another Transportation Network, the *1st Route* Transportation Network can be deleted.