



## **ERROR IMPORTING NETWORKS (ROUTES) IN LOGFAS 7.0.0 AND EARLIER VERSIONS**

Last updated: 13 December 2022

Applies to: LOGFAS 7.0.0.

## Table of contents

---

1. General .....	3
2. Symptoms.....	3
3. Cause .....	3
4. Resolution / workaround.....	4

Document change log			
Version	Comments	Date	Author
1.0	Initial version	23 NOV 2022	Yvon RÉGNIER
2.0	Updated version	13 DEC 2022	Andras Amann

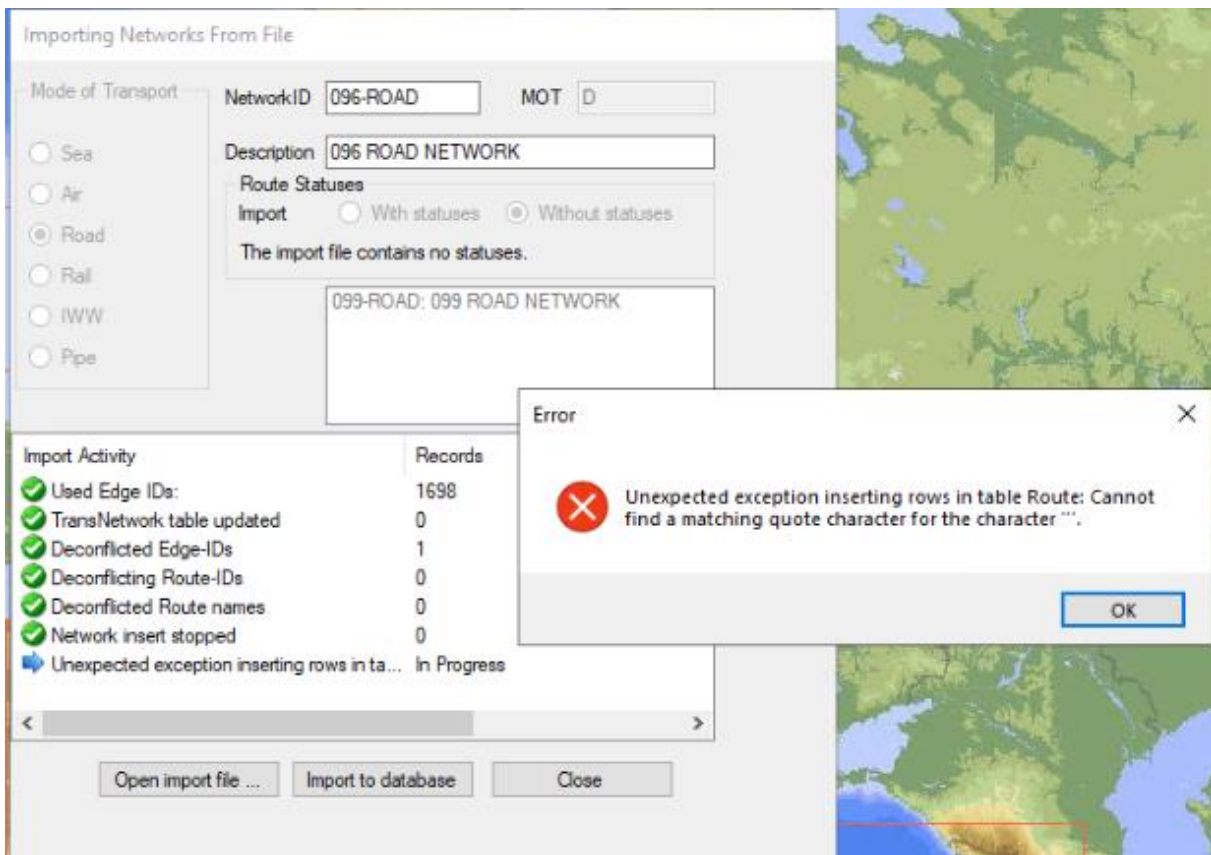
## Error when Importing Networks (Routes) in LOGFAS 7.0.0 and earlier versions

### 1. GENERAL

Through GEOMAN or CORSOM users can export/import Network data from to/from XML files. Starting with LOGFAS 7.1.0 version, Network XML files are exported with complete data. Because of this, when LOGFAS 7.0.0 or an earlier version of LOGFAS is used to import Network XML files exported from 7.1.0 or higher versions, an error may be thrown, in which case the import fails.

### 2. SYMPTOMS

When using GEOMAN or CORSOM 7.0.0 or earlier versions to import a Network XML file exported from 7.1.0 or higher LOGFAS versions, the following error may appear:



### 3. CAUSE

This happens only when importing XML files for Networks with Routes with *Last Update By* and *Last Update On* values, which are populated automatically when updating Route properties.

Update Route
✕

Route Name  
096\_N14

Route Description  
096 ROAD NETWORK

Route Distance (km)  
591.00

Time to Travel Route [minutes]  
0

Route Colour

Thickness  
5

TCR or RCR

Theatre Controlled Route (TCR) \*

Regional Controlled Route (RCR) \*

Neither TCR nor RCR

Main Supply Route (MSR)

\* Only TCRs and RCRs will have a label on the map

Route Status

Generic Status

■     ■     ■     ■     Unknown

Trafficability Status

● Open     ● Limited     ● Restricted     ● Closed     ● Unknown

Threat Status

▲ Unlikely     ▲ Very Possible     ▲ Extremely High     ▲ Advisory     ▲ Unknown

Assessment

Last Updated By  
DESKTOP-V73JI7T\DESKTOP-V73JI7T\MTS L6

Last Updated On  
9/14/2020 9:19:08 AM

#### 4. RESOLUTION / WORKAROUND

There is no workaround applicable in LOGFAS 7.0.0. and earlier versions. The import issue has been fixed in LOGFAS 7.1.0 and higher versions. If not possible to upgrade to any of these LOGFAS versions, please email a support request to [support.logfas@ncia.nato.int](mailto:support.logfas@ncia.nato.int), by mentioning this article number (KB 2022-13).