

ExpressLane 3.0 User's Guide

OTS/I2C has an established effort to provide liaison services with a system that collects biometric information. ExpressLane 3.0, and supporting tools, was developed to support OTS/I2C in their efforts to verify that this data is also being shared with the Agency and to provide an ability to disable this software if liaison doesn't provide us with continued access.

ExpressLane 3.0 will be installed as part of a normal upgrade to this system by OTS officers who maintain it, if the liaison service already has this system. If it is a new system for liaison then it will be installed at Headquarters before the liaison service receives the system. ExpressLane 3.0 will overtly appear to be just another part of this system. It's called: MOBSLangSvc.exe and is stored in \Windows\System32. Covertly it will collect the data files of interest from the liaison system and store them compressed and encrypted in the covert partition on a specially watermarked thumb drive when it is inserted into the system. Additionally, it manages a "kill date" to disable the software by corrupting the license files associated with the software. When ExpressLane 3.0 (MOBSLangSvc) is first installed it sets the kill date to 6 months (183 days) in the future as a default value. This value is changed by inserting a watermarked thumb drive. Part of the watermark is a new "kill date". This "kill date" is set by the CreatePartition utility. The envisioned scenario is:

- The software is initially set up (6 month default).
- A watermarked thumb drive is inserted into the system with a specified "kill date".
- Agency officers return to service the liaison system before the specified "kill date", whereupon they again insert a watermarked thumb drive with a new "kill date".
- If Agency officers don't return (or aren't allowed to) in the specified time the software licenses "expire" and liaison can either call us back to "fix" it or just not be able to use the software anymore.

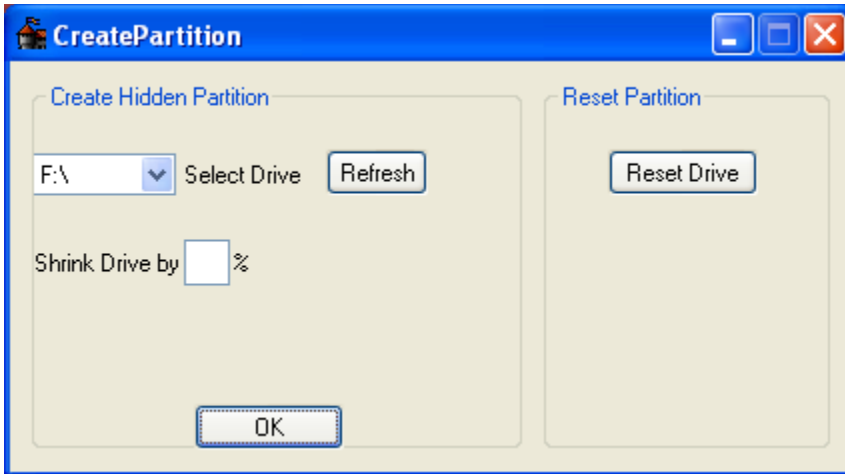
If necessary, to uninstall ExpressLane 3.0 (MOBSLangSvc.exe) open a command prompt, navigate to \Windows\System32 and type: "MOBSLangSvc -u". Two other supporting utilities are also provided, CreatePartition 3.0 and ExitRamp 3.0.



CreatePartition 3.0 Create Partition.Ink

This utility is used to create a covert partition with the appropriate watermark on any commercially purchased thumb drive. It is a GUI program and is to be used at Headquarters or the Station to initialize the thumb drive to be used operationally. The GUI looks like this:

SECRET

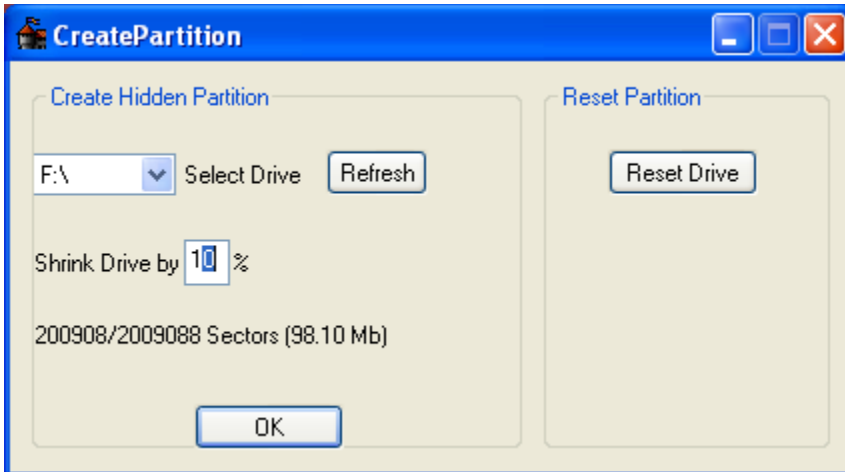


If no removable drive is present on the system then the following error will appear:



Just insert a removable disk, i.e. thumb drive, and click the refresh button.

Select the appropriate drive and then enter the percentage of the disk to use as the covert partition. The actual amount of storage to be used will be dynamically updated on the dialog box as shown below.



Finally, press the OK button. The operation will complete in a few seconds and the following dialog box will be displayed if successful:

SECRET

SECRET



If it's not successful then the following dialog box will be displayed:



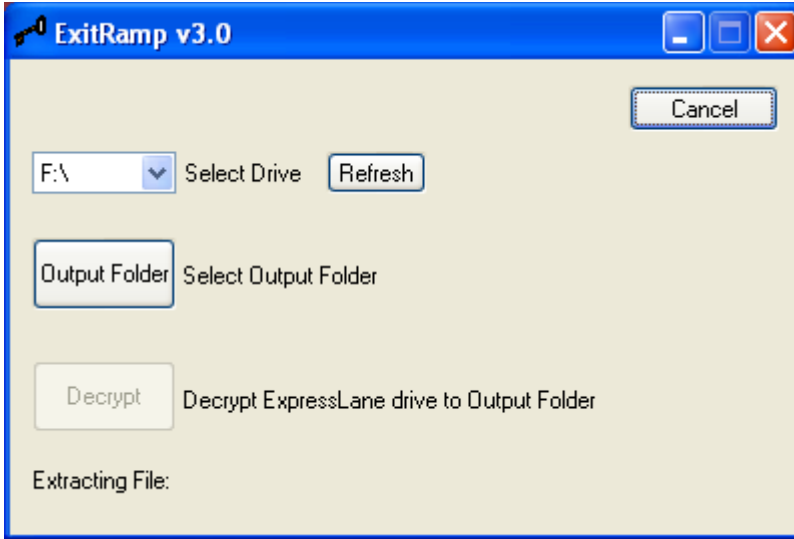
The most likely reason it failed is because the overt storage on the thumb drive is too large to create that size of covert storage. Try deleting overt files or use a smaller covert partition. Care should be taken to not make the covert storage too large or it may be noticeable. Typically, a covert partition of 5% - 10% of the disk original size is about as big as you should make it.



ExitRamp 3.0 ExitRamp2.Ink

The utility ExitRamp 3.0 is used at Headquarters or the Station to collect the data from the covert partition of a thumb drive used by ExpressLane 3.0. The utility is a GUI and look like:

SECRET

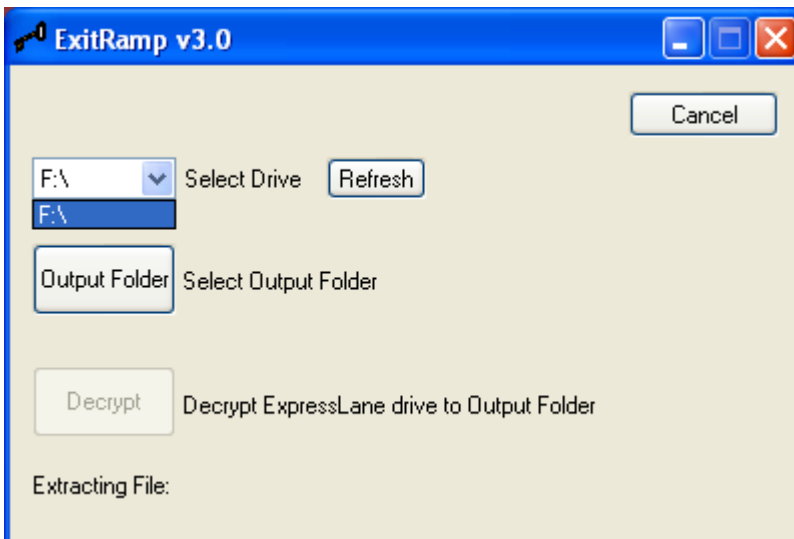


If no removable drive is present on the system then the following error will appear:



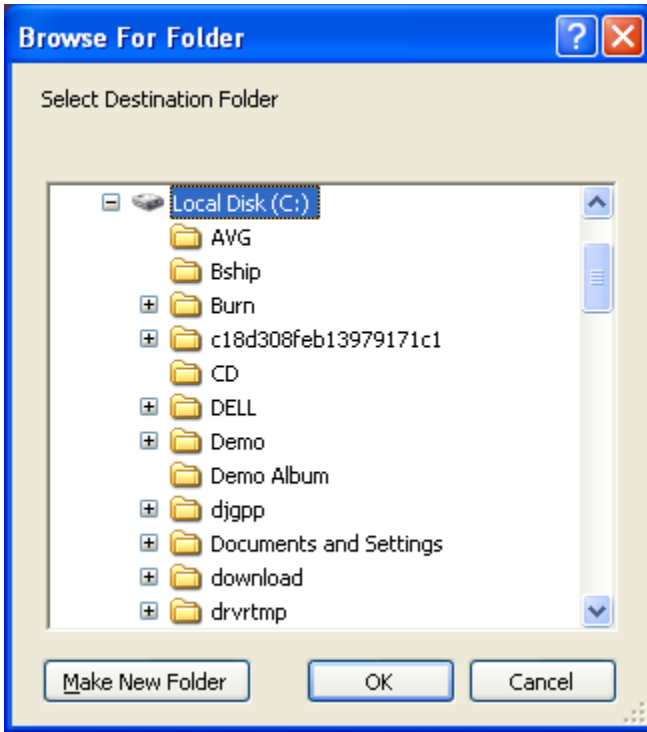
Just insert a removable disk, i.e. thumb drive, and click the refresh button.

Select the appropriate drive:

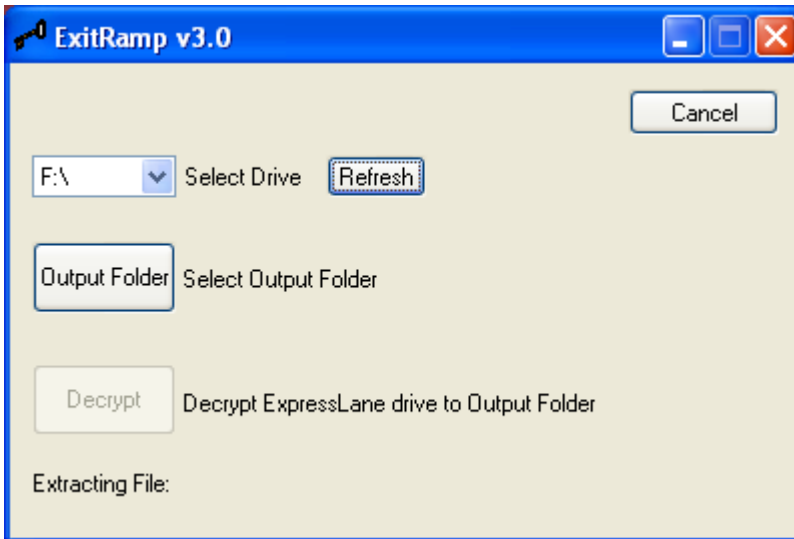


Next select the folder where the collect files will be placed:

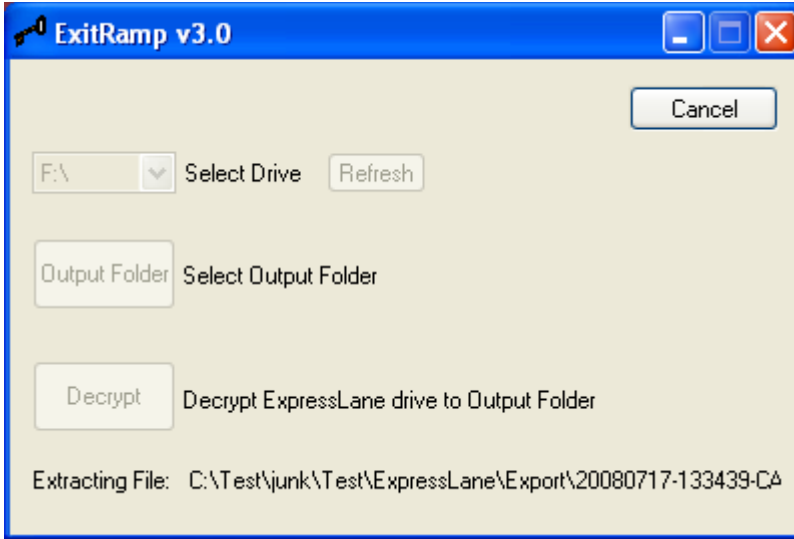
SECRET



Finally, press the Decrypt button.



The decrypted files will appear on the dialog box



When all files have been extracted the following dialog box will appear:

