




Australian Government
Operation COVID Shield

COVID-19 Vaccine Roll-out

19 July 2022


Data as at:
18 Jul 2022

Total vaccine doses



20,140,005
people have had at least one dose

>95%
of people over the age of 16 have had at least one dose



19,800,422
people are fully vaccinated

>95%
of people over the age of 16 are fully vaccinated



14,004,950
people over the age of 16 who have received three or more doses



61,359,477 total vaccine doses administered nationally as at 18 July
+103,544 recorded in the last 24 hours

NSW
19,052,634
(+36,069 daily increase)

VIC
16,057,573
(+24,150 daily increase)

QLD
11,624,358
(+20,673 daily increase)

WA
6,736,189
(+9,728 daily increase)

TAS
1,395,392
(+2,342 daily increase)

SA
4,282,335
(+7,349 daily increase)

ACT
1,610,228
(+2,731 daily increase)

NT
600,768
(+502 daily increase)

*Administration state breakdown indicates state in which a vaccine was administered
**Overall dose count includes instances of more than three doses per person in a small number of cases.

Source: Australian Immunisation Register

Booster Vaccinations

Data as at:
18 Jul 2022



229,726

Indigenous people who have received three or more doses

54.3%

of eligible population (422,773)



167,113

Aged Care Residents who have received three or more doses##

95.3%

of eligible population (175,416)



195,324

NDIS participants

who have received three or more doses#

75.4%

of eligible population (259,000)

22,338

NDIS residents

who have received three or more doses#

90.0%

of eligible population (24,000)



14,004,950

total people who have received three or more doses

+9,358 daily increase

70.9% of eligible population (19,747,980)

	Number of People	Daily Increase	% of Eligible
NSW	4,280,556	3,626	68.6%
VIC	3,727,846	1,974	73.2%
QLD	2,431,458	2,003	63.9%
WA	1,711,109	625	82.8%
SA	1,004,903	700	74.6%
TAS	320,365	195	73.5%
ACT	275,977	131	79.4%
NT	131,977	33	78.3%

120,759

doses administered to persons residing in other territories or with missing residential information

*People may belong to multiple groups and could be represented in the above breakdowns multiple times.


NDIS participants data as at 12 July 2022.

Aged Care Residents data as at 18 July 2022.

Source: Australian Immunisation Register

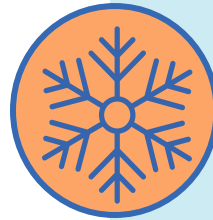
Data as at:
18 Jul 2022

Fourth Doses



98,372
Aged Care Residents who have received four or more doses#

76.1%
of eligible population (129,274)



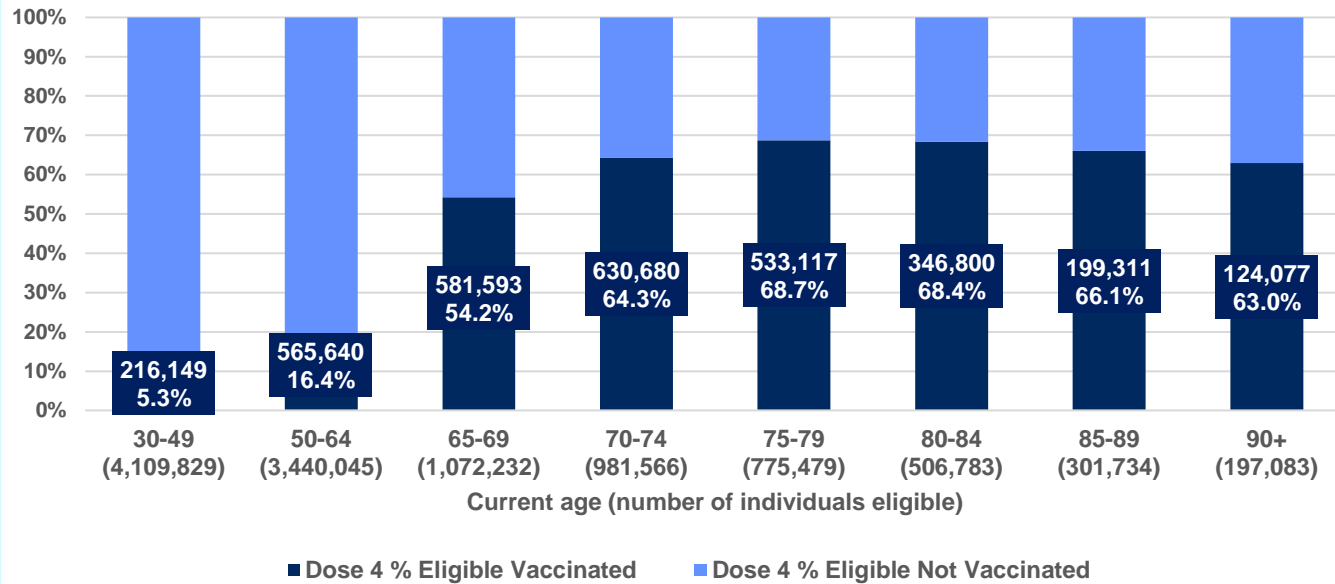
3,218,189
+88,539
28.1%
2,415,578
63.0%

total people (16+) who have received four doses
daily increase (16+)

of eligible 30+ population (11,384,751)

total people (65+) who have received four doses
of eligible 65+ population (3,834,877)

% Individuals eligible vaccinated by current age



	Number of People 16+	Daily Increase
ACT	61,813	1,822
NSW	1,035,268	30,014
NT	13,632	392
QLD	628,502	17,505
SA	261,405	6,537
TAS	88,521	2,078
VIC	788,330	21,240
WA	325,113	8,569

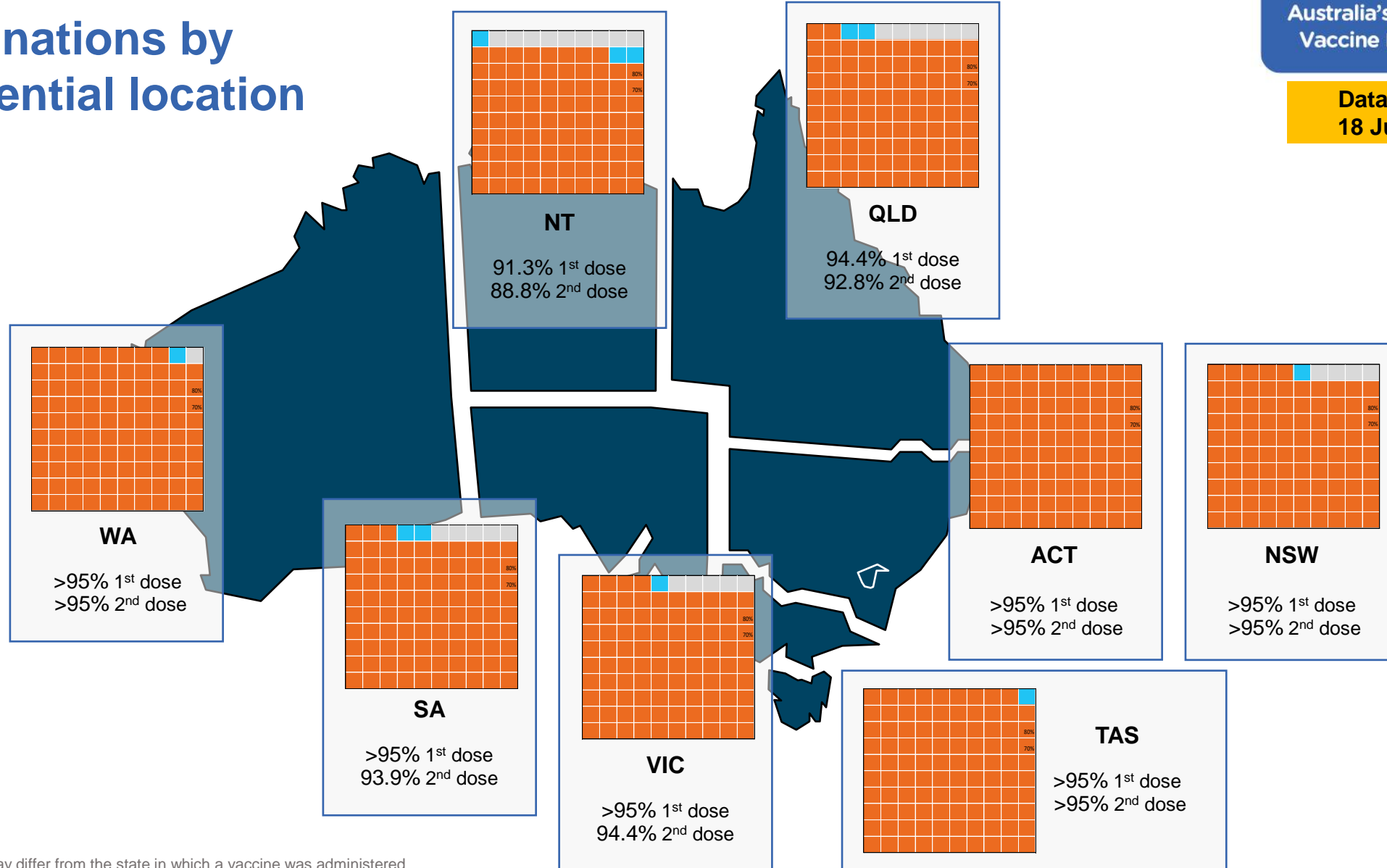
15,605 doses administered to persons residing in other territories or with missing residential information

*People become eligible for a fourth dose three months after their third dose. Individuals may belong to multiple groups and could be represented in the above multiple times.
#Aged Care Residents data as at 17 July 2022.

Source: Australian Immunisation Register

Data as at:
18 Jul 2022

Vaccinations by residential location



*Residential state may differ from the state in which a vaccine was administered

Commonwealth and Jurisdiction vaccine doses administered

Data as at:
18 Jul 2022



61,359,477 total vaccine doses administered nationally as at 18 July

+ 103,544 recorded in the last 24 hours

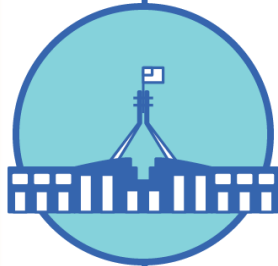


21,413,479

doses administered by state and territory facilities

+ 10,858

recorded in the last 24 hours



39,945,998

doses administered by commonwealth facilities

+ 92,686

recorded in the last 24 hours

38,623,419 total vaccine doses administered in primary care settings

1,322,579 total vaccine doses administered in aged care and disability settings

NSW	Jurisdictions	Commonwealth
Cumulative	5,167,085	13,885,549
Daily increase	3,933	32,136

VIC	Jurisdictions	Commonwealth
Cumulative	6,152,824	9,904,749
Daily increase	1,709	22,441

QLD	Jurisdictions	Commonwealth
Cumulative	3,871,579	7,752,779
Daily increase	809	19,864

WA	Jurisdictions	Commonwealth
Cumulative	2,556,580	4,179,609
Daily increase	1,816	7,912

TAS	Jurisdictions	Commonwealth
Cumulative	635,677	759,715
Daily increase	425	1,917

SA	Jurisdictions	Commonwealth
Cumulative	1,864,964	2,417,371
Daily increase	1,326	6,023

ACT	Jurisdictions	Commonwealth
Cumulative	816,915	793,313
Daily increase	696	2,035

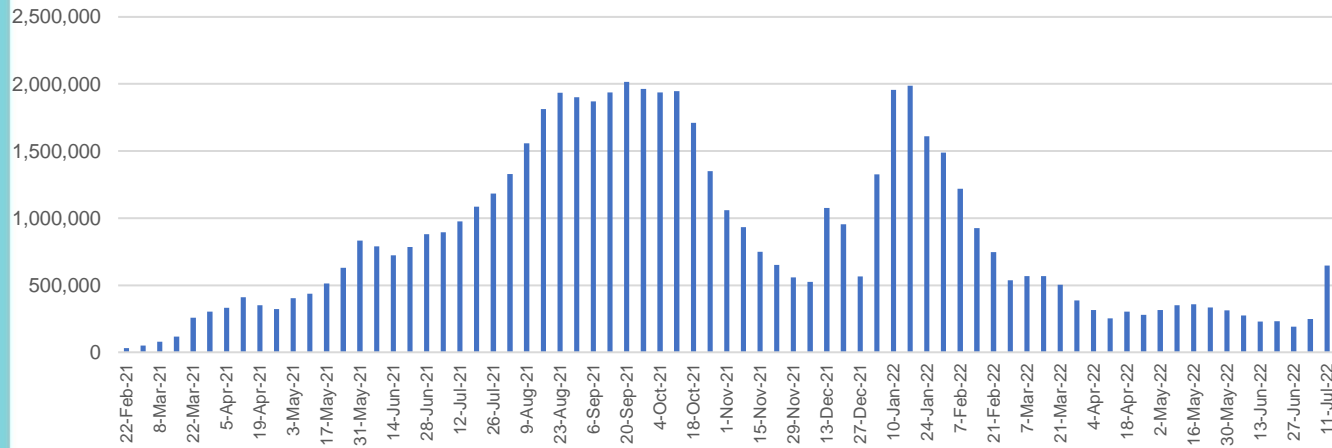
NT	Jurisdictions	Commonwealth
Cumulative	347,855	252,913
Daily increase	144	358

Vaccine milestone charts

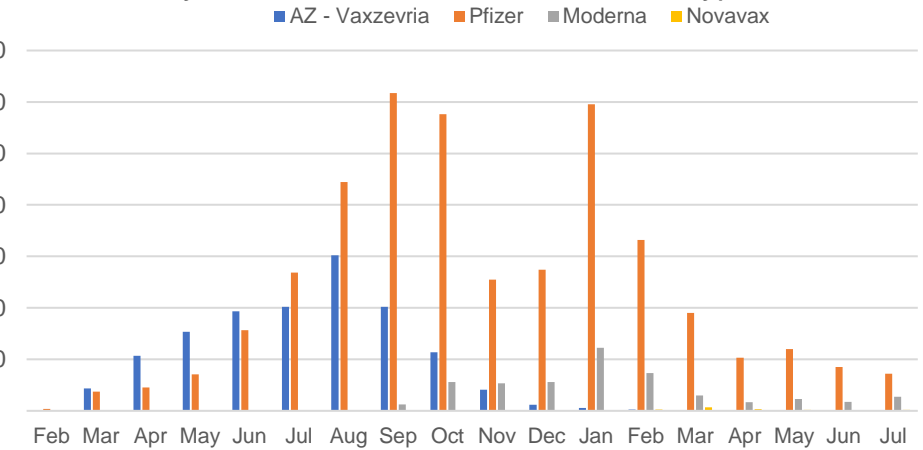
Data as at:
18 Jul 2022

Australia's COVID-19
Vaccine Roadmap

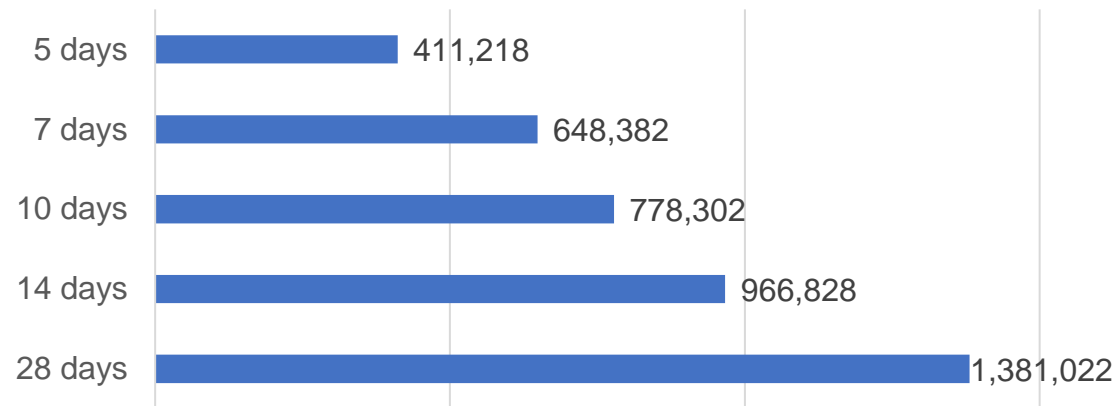
Doses Administered by Week



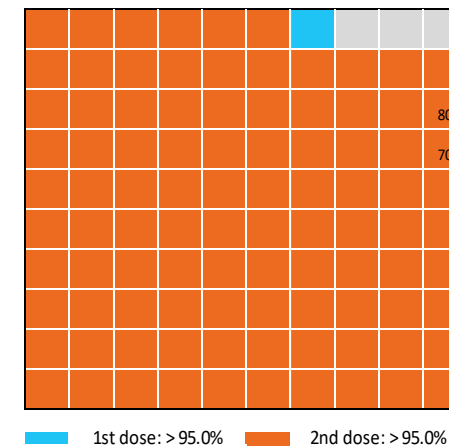
Doses by administration month and vaccine type



Doses Reported



Eligible population percentage coverage



*Each square represents 1% of the national population. Squares are filled as milestones are achieved.

*Sourced from the Australian Immunisation Register.

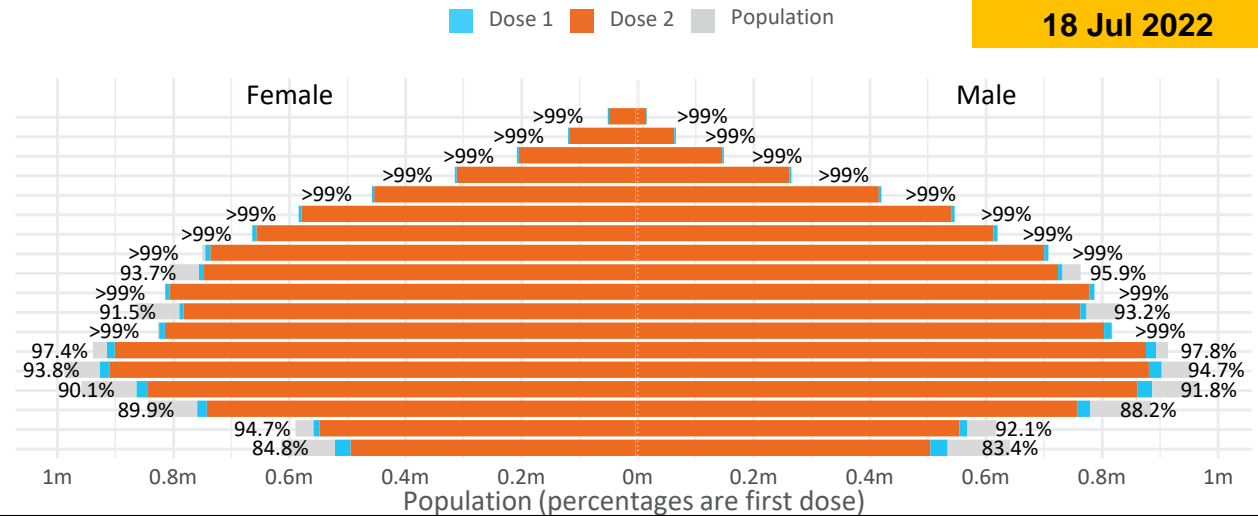
Doses by age and sex

First and second doses by age and sex

	16+	50+	12-15	5-11
Dose 1	97.67% (20,140,005 doses / 20,619,959 people)	>99% (8,951,241 doses / 8,749,703 people)	84.12% (1,046,423 doses / 1,243,990 people)	52.29% (1,190,439 doses / 2,276,638 people)
Dose 2	96.03% (19,800,422 doses / 20,619,959 people)	>99% (8,842,046 doses / 8,749,703 people)	79.60% (990,186 doses / 1,243,990 people)	40.30% (917,408 doses / 2,276,638 people)

Data as at:
18 Jul 2022

Age	Dose 1	Dose 2
95+	66,910 (>99%)	63,421 (>99%)
90-94	183,974 (>99%)	178,482 (>99%)
85-89	353,884 (>99%)	347,131 (>99%)
80-84	575,246 (>99%)	568,064 (>99%)
75-79	870,458 (>99%)	861,838 (>99%)
70-74	1,121,070 (>99%)	1,109,480 (>99%)
65-69	1,274,433 (>99%)	1,259,213 (>99%)
60-64	1,441,311 (>99%)	1,424,442 (>99%)
55-59	1,475,936 (94.9%)	1,459,028 (93.8%)
50-54	1,588,019 (>99%)	1,570,947 (>99%)
45-49	1,550,152 (92.5%)	1,531,694 (91.4%)
40-44	1,629,042 (>99%)	1,604,977 (>99%)
35-39	1,796,150 (97.9%)	1,763,753 (96.1%)
30-34	1,821,374 (94.7%)	1,779,062 (92.5%)
25-29	1,744,400 (91.5%)	1,696,189 (89.0%)
20-24	1,530,639 (89.4%)	1,489,849 (87.0%)
16-19	1,117,007 (93.4%)	1,092,852 (91.4%)
12-15	1,046,423 (84.1%)	990,186 (79.6%)



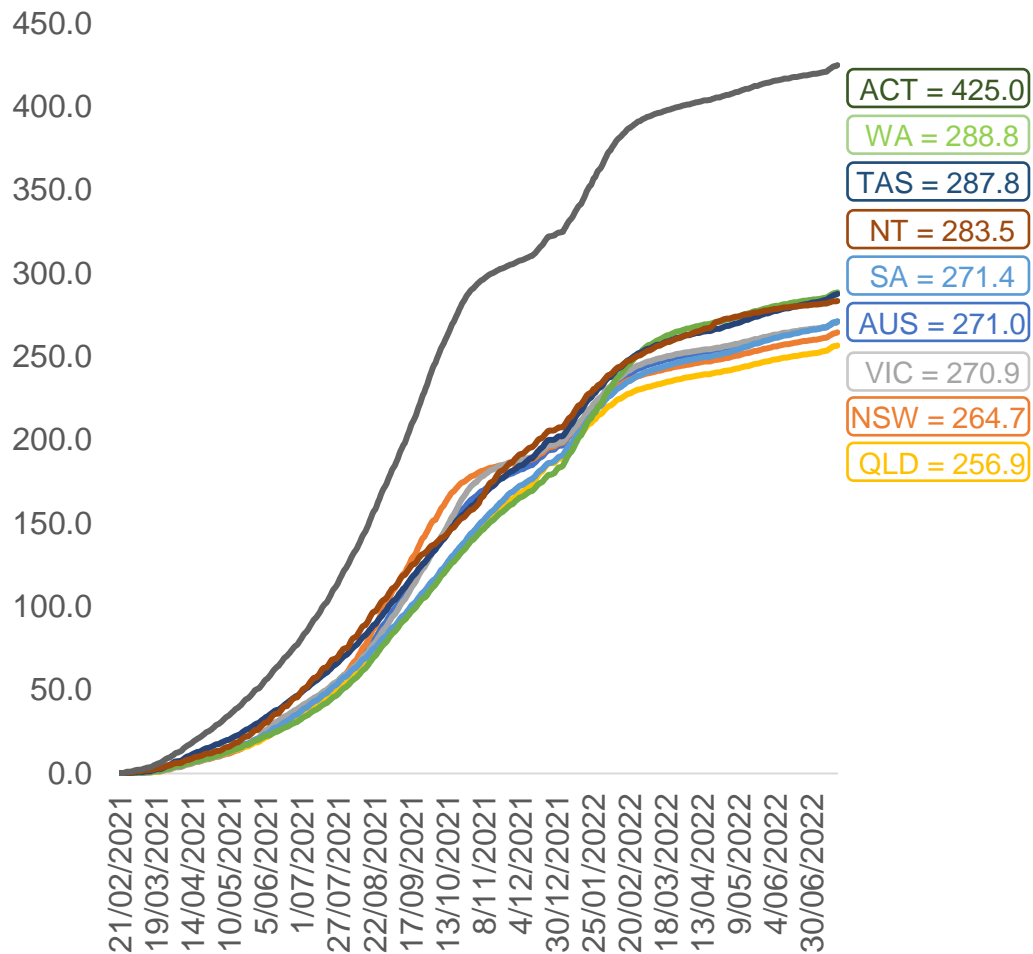
	AUS	ACT	NSW	NT	QLD	SA	TAS	VIC	WA
16 and over - dose 1	20,140,005	353,911	6,352,303	173,970	3,881,172	1,381,434	446,549	5,182,322	2,103,812
16 and over - dose 2	19,800,422	348,119	6,252,670	169,279	3,817,165	1,352,032	437,549	5,102,909	2,072,491
16 and over - population	20,619,959*	344,037	6,565,651	190,571	4,112,707	1,440,400	440,172	5,407,574	2,114,978
16 and over % with dose 1	97.67%	>99%	96.75%	91.29%	94.37%	95.91%	>99%	95.83%	>99%
16 and over % with dose 2	96.03%	>99%	95.23%	88.83%	92.81%	93.87%	>99%	94.37%	97.99%
5 to 11 - dose 1	1,190,439	31,731	356,510	13,088	205,984	83,446	28,389	324,043	139,778
5 to 11 - dose 2	917,408	27,640	282,190	8,837	152,376	64,744	23,335	249,755	103,912
5 to 11 - population	2,276,638	39,789	716,460	24,750	478,731	148,816	45,033	578,499	244,154
5 to 11 % with dose 1	52.29%	79.75%	49.76%	52.88%	43.03%	56.07%	63.04%	56.01%	57.25%
5 to 11 % with dose 2	40.30%	69.47%	39.39%	35.71%	31.83%	43.51%	51.82%	43.17%	42.56%
12 to 15 - dose 1	1,046,423	20,131	322,028	10,691	204,959	68,035	22,764	273,432	115,281
12 to 15 - dose 2	990,186	19,578	307,713	9,620	191,296	64,285	21,653	261,468	106,685
12 to 15 - population	1,243,990	19,693	390,330	13,060	270,146	82,747	26,308	308,611	132,869
12 to 15 % with dose 1	84.12%	>99%	82.50%	81.86%	75.87%	82.22%	86.53%	88.60%	86.76%
12 to 15 % with dose 2	79.60%	>99%	78.83%	73.66%	70.81%	77.69%	82.31%	84.72%	80.29%

*National population will not equal sum of listed jurisdictions due to a small number of people counted in national population residing in some 'other' territories. Sum of state doses will not add to national total as some records are unable to be geocoded to a State or Territory.
Doses sourced from Australian Immunisation Register, population from ABS ERP June 2020

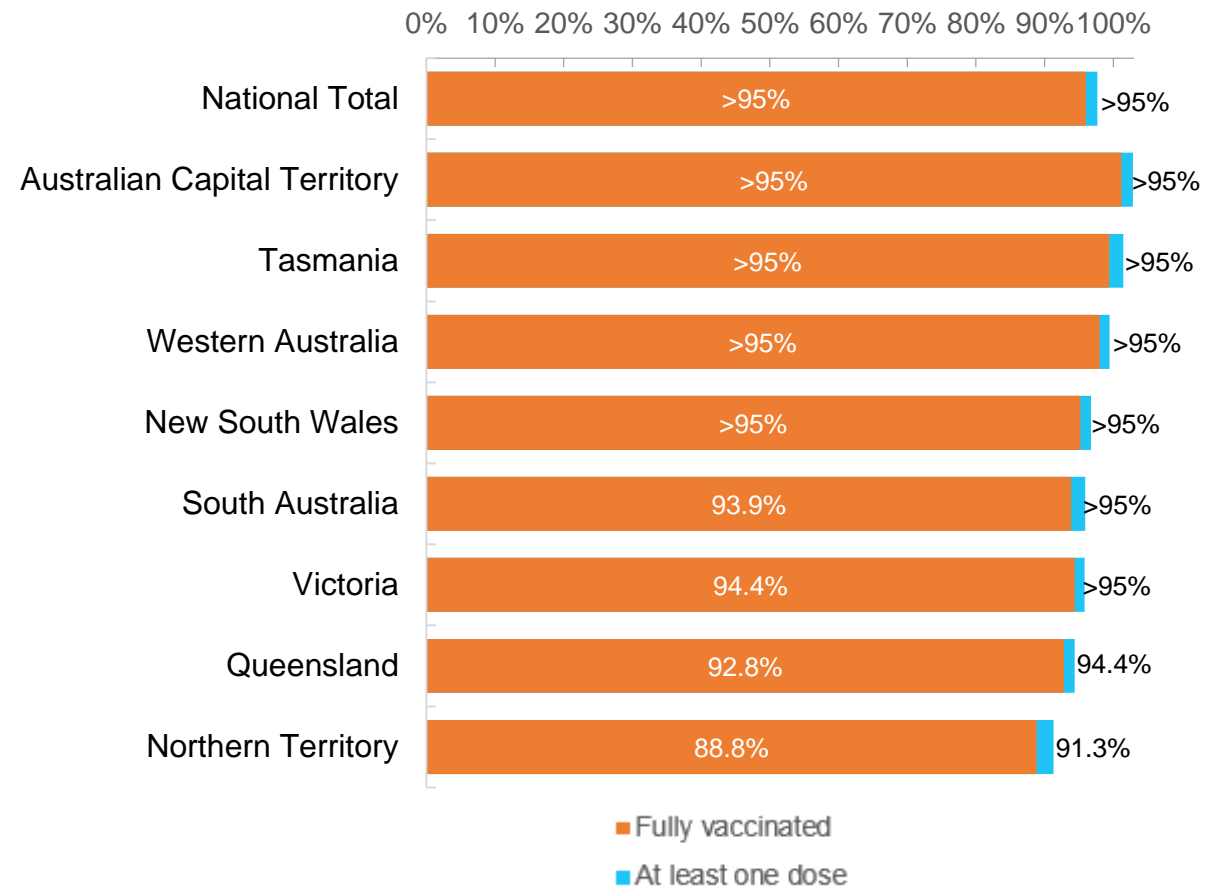
Data as at:
18 Jul 2022

Vaccinations by location

Cumulative total doses administered vs eligible state populations*



First and Second Doses by residential location



*Not an indication of percentage vaccinated, numbers will exceed 100 due to multiple doses required per person of the population. All doses are included for those aged 12 and above, and are based on vaccination provider location.

Aboriginal and Torres Strait Islander peoples

Number of people vaccinated

Data as at:
12 Jul 2022
Updated weekly

Australia's COVID-19
Vaccine Roadmap



444,318

people over the age of 16
have had at least one dose

85.0%

of people over the age of 16
have had at least one dose



426,102

people over the age of 16
are fully vaccinated

81.5%

of people over the age of 16 are
fully vaccinated



People aged 12 – 15 years

47,760

41,838

67.6%

59.3%

At least one dose

Fully vaccinated

178 Aboriginal community controlled health services (ACCHS)

0#	50	27	44	12	3	21	21
ACT	NSW	NT	QLD	SA	TAS	VIC	WA

Medicare Address State ^{##}	Individuals Dose 1	Individuals Dose 1 %	Individuals Dose 2	Individuals Dose 2 %
Australian Capital Territory	4,800	91.8%	4,681	89.6%
New South Wales	136,312	87.3%	133,265	85.4%
Northern Territory	41,316	89.8%	39,372	85.5%
Queensland	116,837	81.9%	111,512	78.1%
South Australia	20,128	80.7%	18,761	75.2%
Tasmania	13,904	88.9%	13,505	86.3%
Victoria	35,751	90.5%	34,958	88.5%
Western Australia	53,748	86.8%	50,161	81.0%
Unknown/Other Territories	21,522	70.5%	19,887	65.2%
Totals	444,318	85.0%	426,102	81.5%

Source: Australian Immunisation Register

*Identifying as Aboriginal and Torres Strait Islander is optional and the estimated population may be under reported.

**Includes all Aboriginal and Torres Strait Islander peoples who have received a vaccination, not limited to those administered in an ACCHS setting

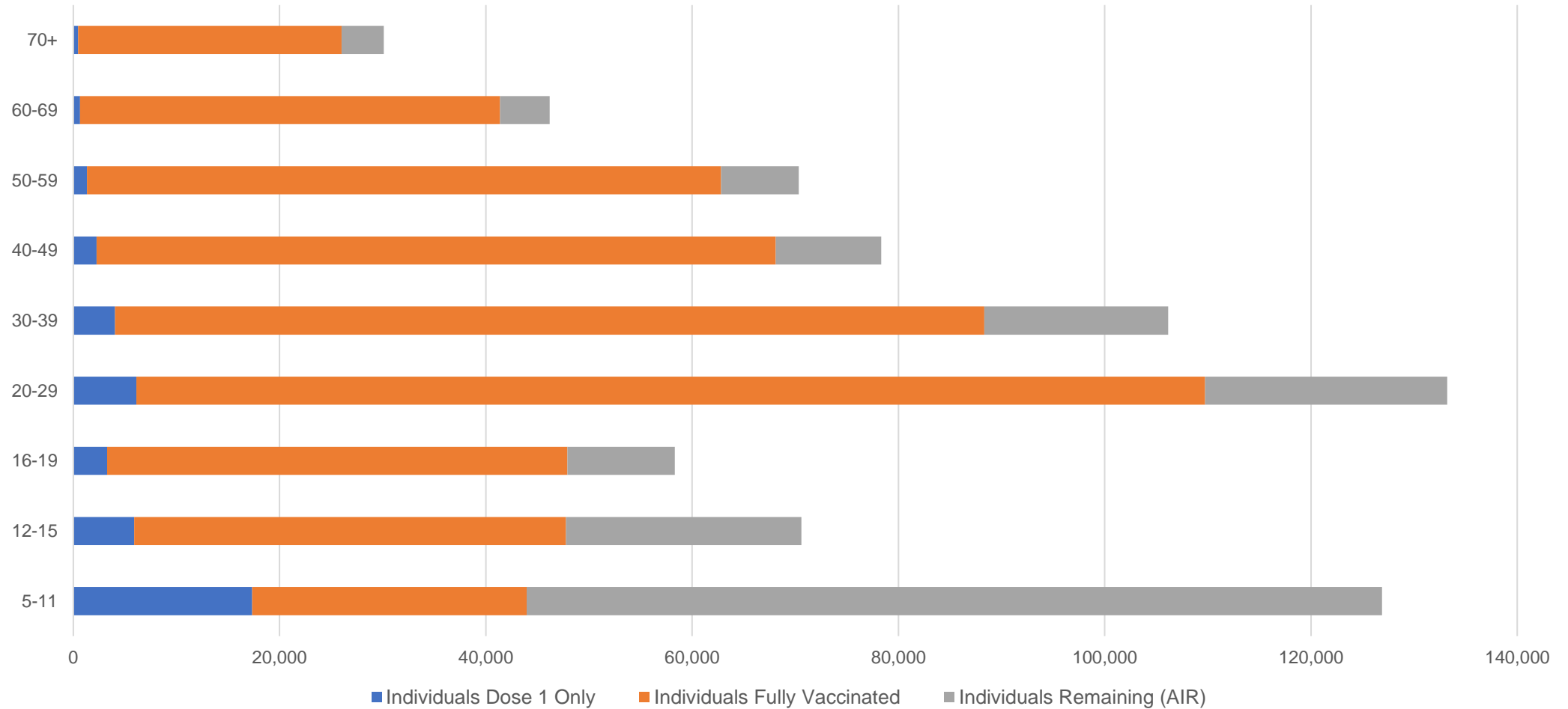
#ACCHS in the ACT are currently operating as a Commonwealth Vaccine Clinics so not included to avoid double counting

##The above table includes all identified Aboriginal and Torres Strait Islander people who are aged 16 and above by their state of residence.

Aboriginal and Torres Strait Islander peoples Number of people vaccinated by age

Data as at:
12 Jul 2022
Updated weekly

Australia's COVID-19
Vaccine Roadmap



Source: Australian Immunisation Register

Commonwealth primary care

Data as at:
18 Jul 2022

Australia's COVID-19
Vaccine Roadmap



Primary care vaccine administration sites

5,694	123	178	3,617
GPs	CVCs	ACCHS	Pharmacies



38,623,419 total vaccine doses administered
primary care settings as at 18 July
+ 92,373 recorded in the last 24 hours

Primary care vaccinations by provider type

	Doses administered	Daily increase	7 day increase
General Practice* includes other Commonwealth	30,605,375	47,350	290,731
Pharmacy	8,018,044	45,023	283,627

NSW
13,311,892
(+32,153 daily increase)

VIC
9,571,955
(+22,386 daily increase)

QLD
7,464,376
(+19,386 daily increase)

WA
4,037,987
(+7,861 daily increase)

TAS
738,955
(+1,999 daily increase)

SA
2,335,918
(+6,057 daily increase)

ACT
615,278
(+1,983 daily increase)

NT
226,284
(+308 daily increase)

320,774

doses administered to persons residing in other territories or with missing residential information

*General practice includes Commonwealth Vaccination Clinics, Aboriginal Community Health Centres, Royal Flying Doctor Service and other Commonwealth vaccination facilities

Source: Australian Immunisation Register

Data as at:
18 Jul 2022

Commonwealth aged care and disability doses administered



1,322,579 (+ 313 last 24 hours)

Total vaccine doses administered in aged care and disability facilities as at 18 July

Number of doses administered as part of the Commonwealth aged and disability care rollout

NSW
572,969
(**<10** daily increase)

VIC
248,246
(**+28** daily increase)

QLD
210,751
(**+166** daily increase)

WA
113,001
(**+16** daily increase)

TAS
23,735
(**<10** daily increase)

SA
86,573
(**<10** daily increase)

ACT
17,970
(**<10** daily increase)

NT
7,697
(**<10** daily increase)

41,637

doses administered to persons residing in other territories or with missing residential information

Source: Australian Immunisation Register

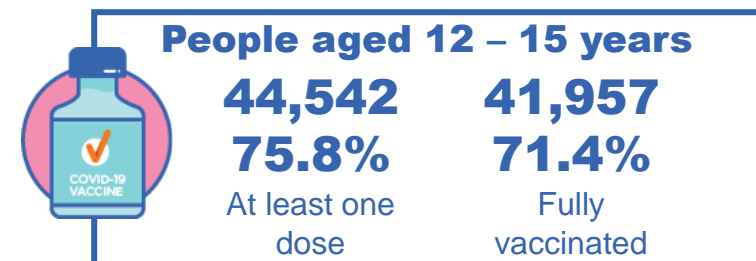
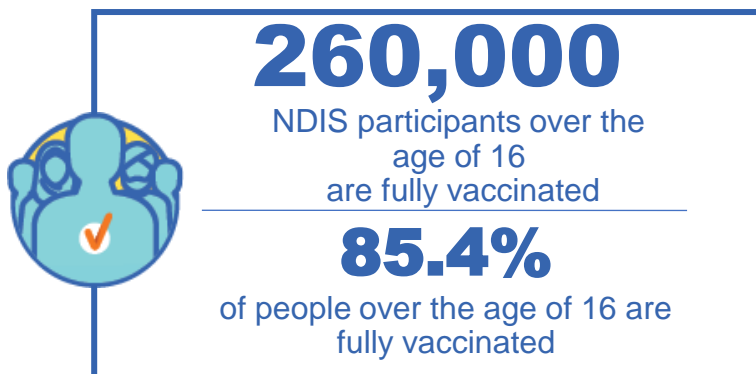
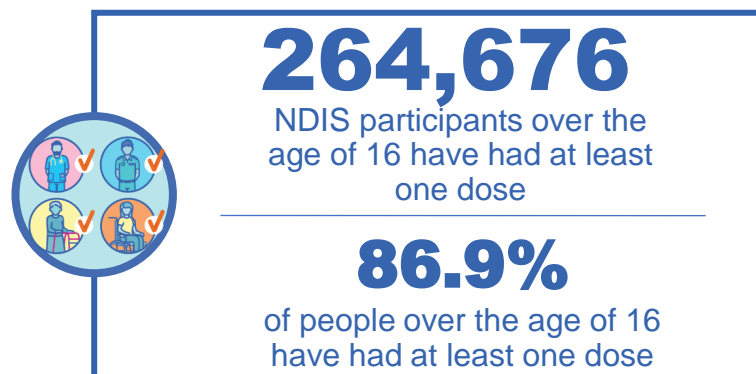
*Sourced from the Australian Immunisation Register. Includes all persons vaccinated at participating residential aged care, disability and related industry settings.

**State level breakdown indicates the residential location and may not align to the state in which the vaccination occurred.

National Disability Insurance Scheme (NDIS) reported vaccinations

Data as at:
14 July 2022
Updated weekly

Australia's COVID-19
Vaccine Roadmap



NDIS participant vaccinations

	People aged 16+ with at least one dose	People aged 16+ fully vaccinated	% People aged 16+ with at least one dose	% People aged 16+ fully vaccinated
ACT	4,971	4,909	89.0%	87.9%
NSW	80,935	79,680	87.5%	86.1%
NT	2,295	2,226	77.6%	75.3%
QLD	52,594	51,599	85.1%	83.5%
SA	21,694	21,201	84.6%	82.7%
TAS	6,619	6,467	87.2%	85.2%
VIC	70,267	69,110	88.1%	86.6%
WA	25,301	24,808	88.2%	86.5%
National	264,676	260,000	86.9%	85.4%

Source: Linkage between National Disability Insurance Agency data and the Australian Immunisation Register. Total NDIS participant numbers as at 30 June. Australian Immunisation Register data as at 13 July. Includes all participants regardless of residence type.

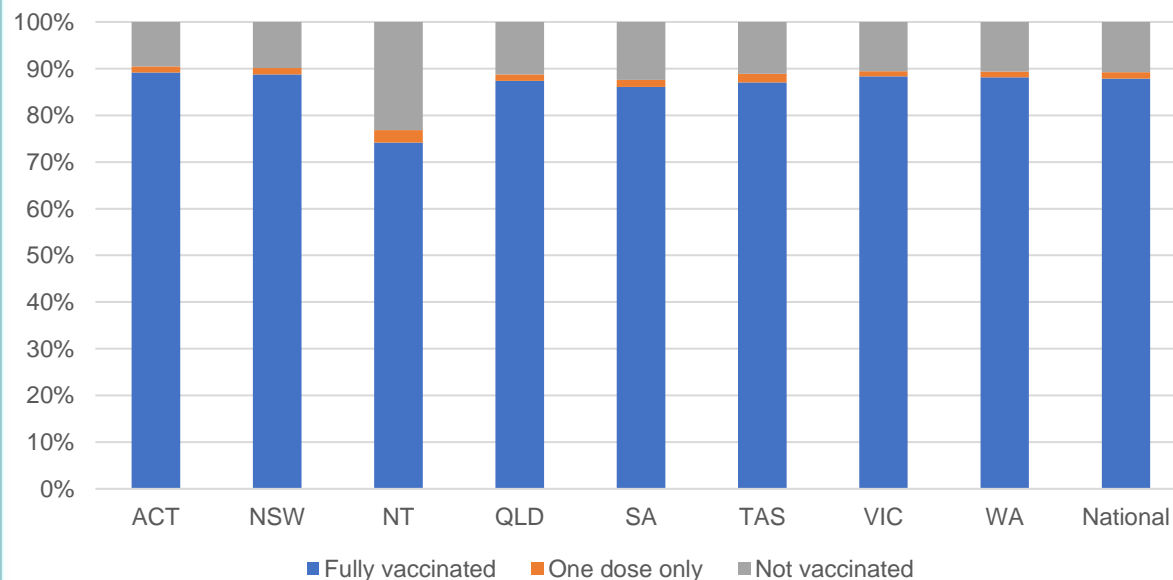
National Disability Insurance Scheme (NDIS) reported vaccinations

Data as at:
14 July 2022
Updated weekly

Australia's COVID-19
Vaccine Roadmap

NATIONAL	Total people with at least one dose	People fully vaccinated	Total number of individuals in cohort	% People with at least one dose	% People fully vaccinated
NDIS participants living in disability accommodation	21,273	20,955	23,858	89.2%	87.8%

NDIS participants in disability and aged care accommodation



Source: Linkage between National Disability Insurance Agency data and the Australian Immunisation Register. Includes participants residing in disability accommodation only.

Source: Total NDIS participant numbers as at 30 June. Participant data as at 12 July. Australian Immunisation Register data as at 13 July. Worker data as at 14 July.

NDIS workforce vaccinations

	NDIS workers with at least one dose	NDIS workers fully vaccinated	% NDIS workers with at least one dose	% NDIS workers fully vaccinated
NSW	128,234	123,322	98.3%	94.6%
VIC	117,646	114,405	98.5%	95.8%
QLD	71,568	70,714	97.9%	96.7%
WA	34,532	33,143	98.9%	95.0%
SA	35,309	33,574	98.5%	93.7%
TAS	12,410	12,025	98.5%	95.4%
ACT	12,343	12,316	99.8%	99.6%
NT	3,967	3,819	99.6%	95.9%
TOTAL	416,009	403,318	98.4%	95.4%

Source: the NDIS Commission has established a requirement for registered NDIS providers who provide intensive disability support services to report on the vaccination status of workers they employ, or otherwise engage, to deliver NDIS-funded supports and services, and who are required to be vaccinated in accordance with in-force state and territory public health orders. The statistics reflect data reported to the NDIS Commission by registered NDIS providers and should be considered indicative and subject to change

Note: Some registered NDIS providers are yet to report on the vaccination status of their workforce. The NDIS Commission is working with those providers around reporting requirements.

Remaining workers not included include those exempt from vaccination requirements, workers whose vaccination status is not yet verified by the provider (such as workers on leave) and provider reporting anomalies.

Residential aged care vaccination rollout

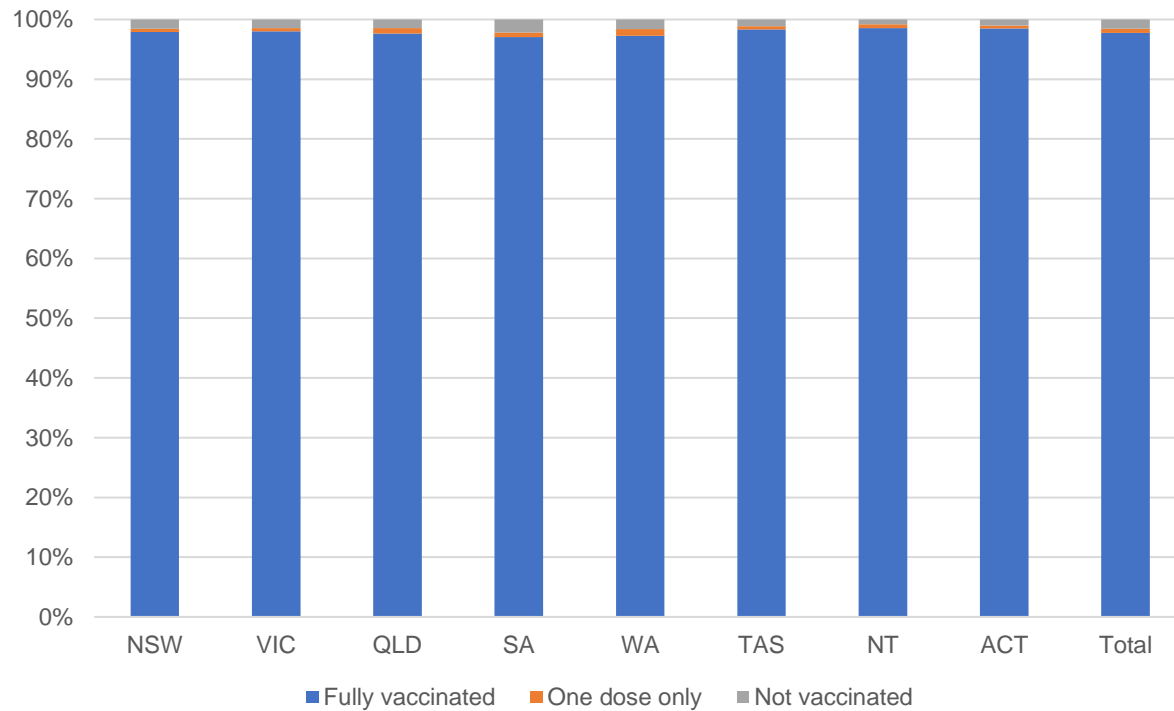
Residential aged care facilities status

175,388 People fully vaccinated

176,630 People with at least one dose

Data as at: 14 July 2022
Updated weekly

Aged care resident vaccinations



Aged care worker vaccinations

Jurisdictions	Total workers with at least one dose	Workers fully vaccinated	% Workers with at least one dose	% Workers fully vaccinated
NSW	77,174	77,049	99.9%	99.7%
VIC	70,741	70,739	100.0%	100.0%
QLD	48,729	48,716	100.0%	100.0%
SA	26,657	26,647	100.0%	100.0%
WA	24,860	24,855	100.0%	100.0%
TAS	7,546	7,546	100.0%	100.0%
NT	925	925	100.0%	100.0%
ACT	2,965	2,965	100.0%	100.0%
Total	259,597	259,442	100.0%	99.9%

Source: Residential aged care provider self-reported COVID-19 vaccination information

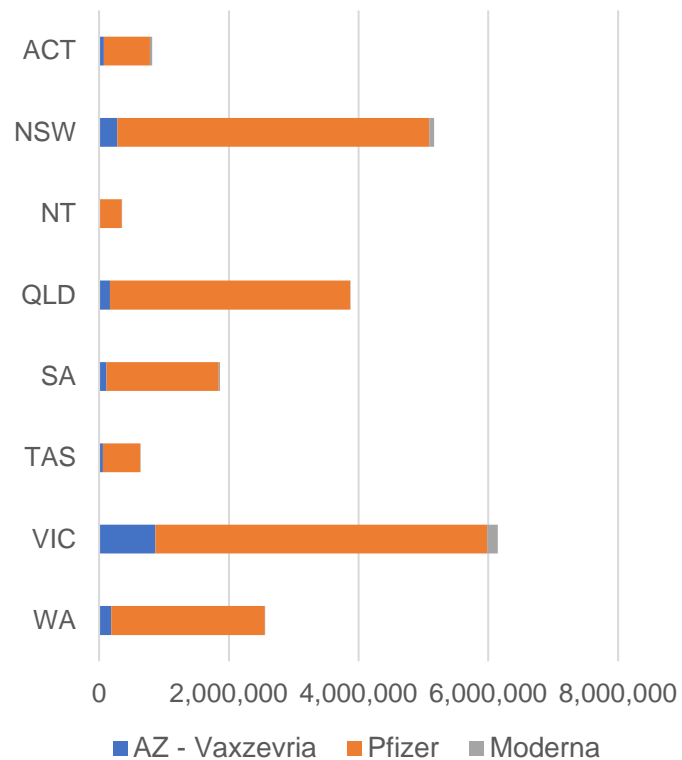
*Status updates are provided by facilities at least once per week. Reporting is updated Monday to Friday to encompass different facility updates being made on different days.

Data is sourced directly from Aged Care Service Providers and is not drawn or closely aligned with data from AIR due to inconsistencies and potential lags in uploading of records.

Data as at:
18 Jul 2022

Jurisdiction administered

Total vaccine doses administered in State and Territory clinics as at 18 July



21,413,479 total vaccine doses administered in State and Territory clinics as at 18 July
 + **10,858** recorded in the last 24 hours
 + **71,802** recorded in the last 7 days

NSW
5,167,085
 (+3,933 daily increase)

VIC
6,152,824
 (+1,709 daily increase)

QLD
3,871,579
 (+809 daily increase)

WA
2,556,580
 (+1,816 daily increase)

TAS
635,677
 (+425 daily increase)

SA
1,864,964
 (+1,326 daily increase)

ACT
816,915
 (+696 daily increase)

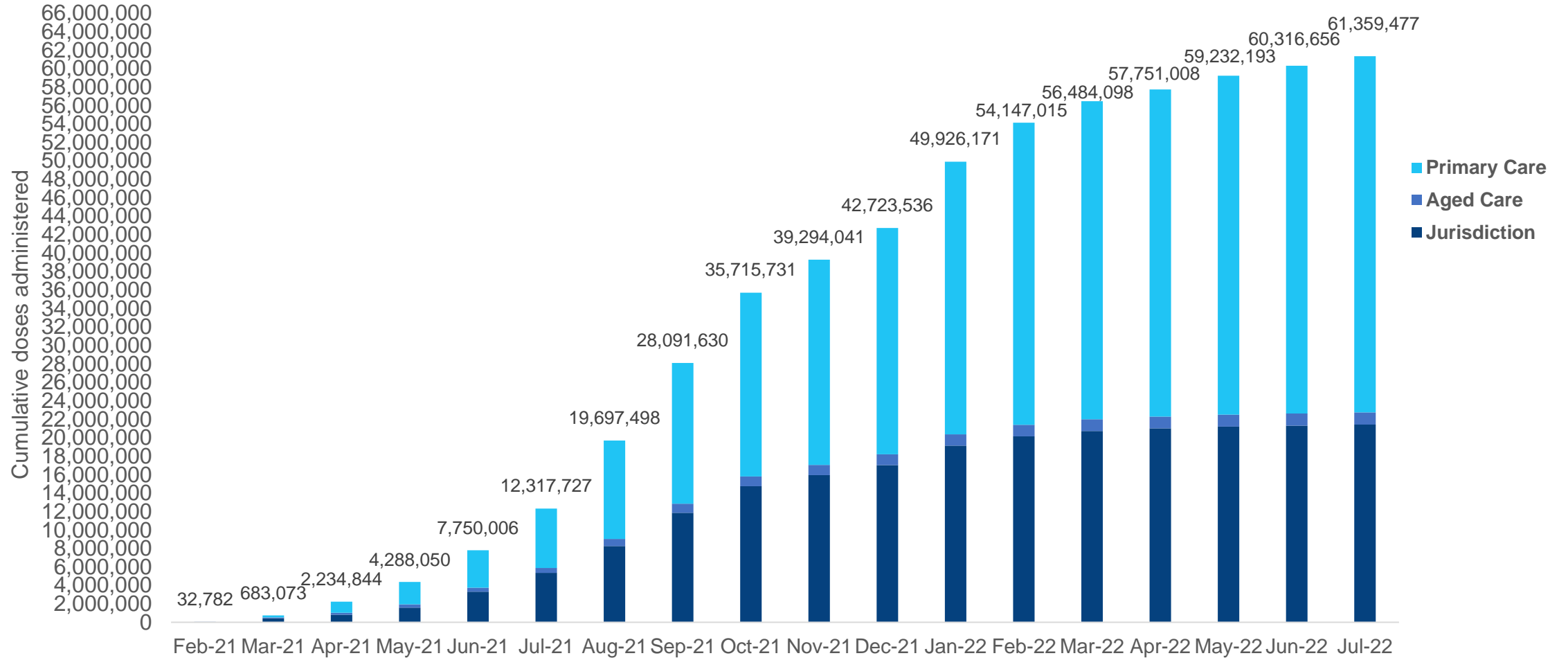
NT
347,855
 (+144 daily increase)

*Sourced from the Australian Immunisation Register. Numbers are calculated as difference in daily cumulative reported numbers to allow for historical corrections.

Source: Australian Immunisation Register

Cumulative doses administered by channel

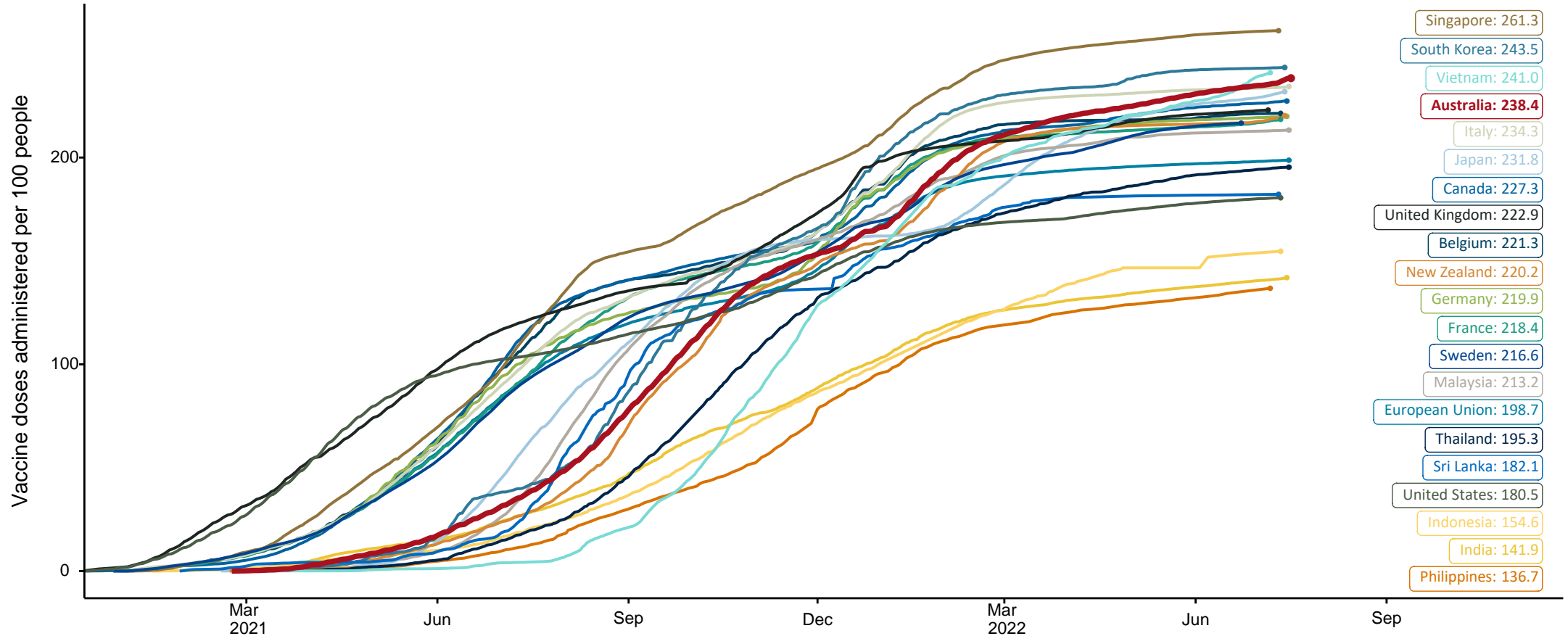
Data as at:
18 Jul 2022



Source: Australian Immunisation Register

COVID-19 vaccine doses per 100, Australia and select countries

Data as at:
17 July 2022
Updated weekly

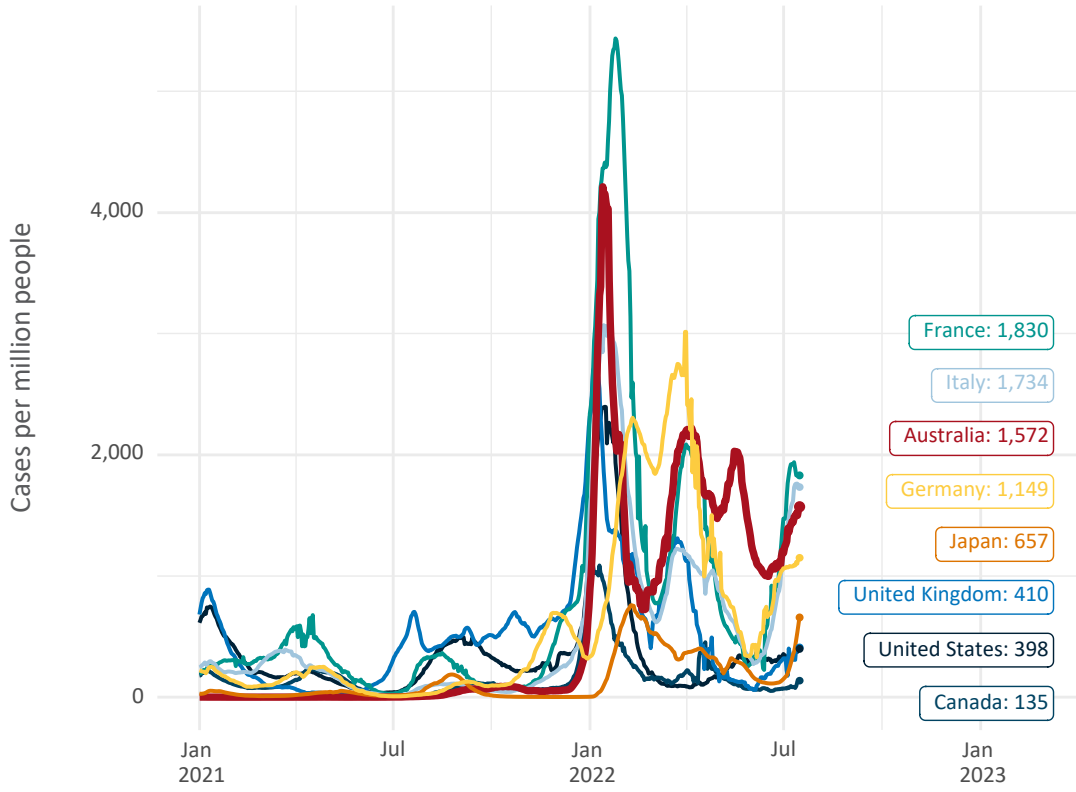


Note: From 11 January 2022, data for Australia includes all doses administered to people 5 and over. Prior to 11 January, data was for 12 and over.
Source: Department of Health (Australia), Our World in Data (international)
Latest data: 17 July

Data as at:
17 July 2022
Updated weekly

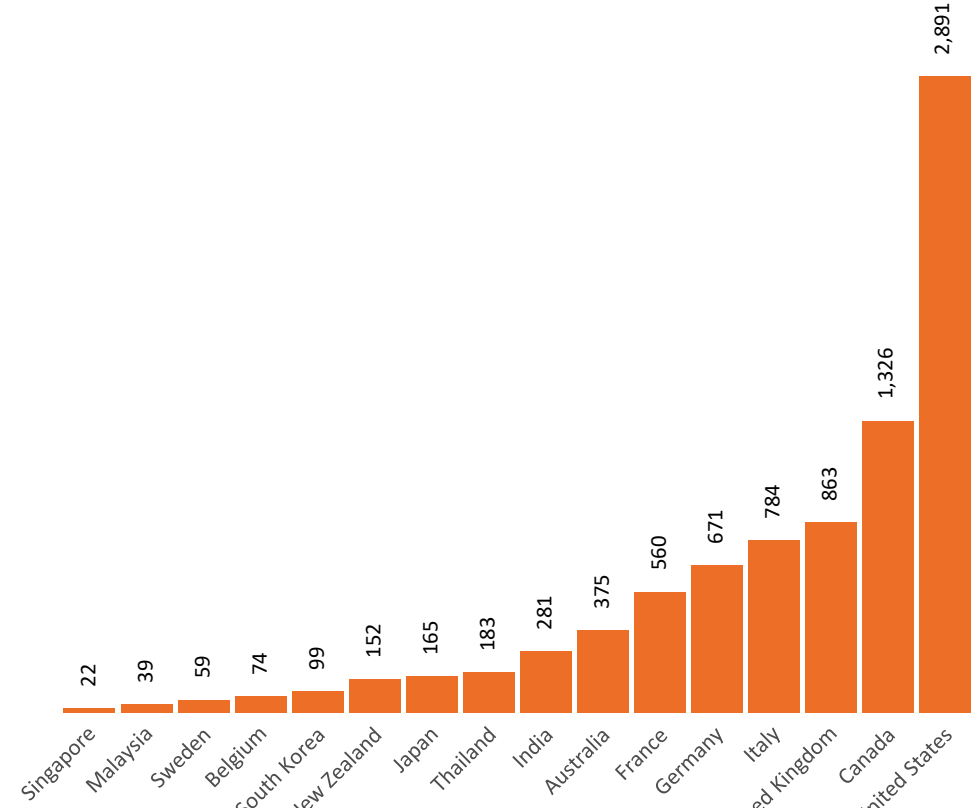
International data – COVID-19

New daily cases per million since 2021, Australia and G7 countries
Smoothed - 7 day average



Source: OWID
Data downloaded: 18 Jul 2022 09:22
Latest data: 16 Jul 2022

COVID-19 deaths in past 7 days - Australia and select countries



Source: OWID
Data downloaded: 18 Jul 2022 09:22
Latest data: 16 Jul 2022