

## KNOWLEDGE BASE ARTICLE

### Logistics Functional Area Services (LOGFAS) v6.2.2

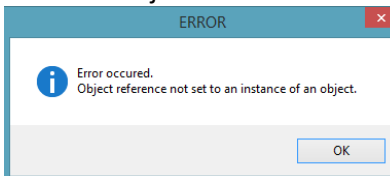
**To** : End user  
**Subject** : ADAMS can build a DDP from a SOR/ADL when the force has a hierarchy that is not used in the AFL  
**Reference(s)** :

#### 1. Applicability

LOGFAS 6.2.2 (64-bit operating systems)

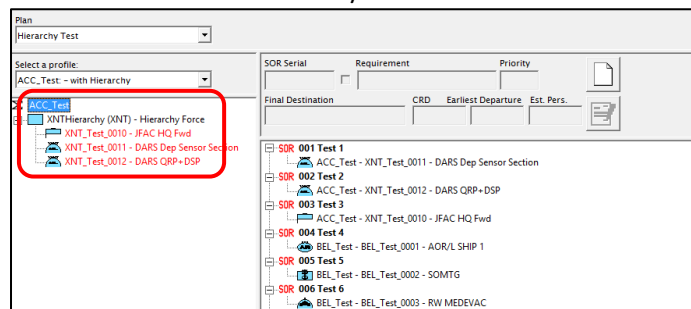
#### 2. Problem definition

When trying to build a new DDP from a SOR/ADL in ADAMS an Error Message appears: "Error occurred. Object reference not set to an instance of an object".



#### 3. Problem investigation

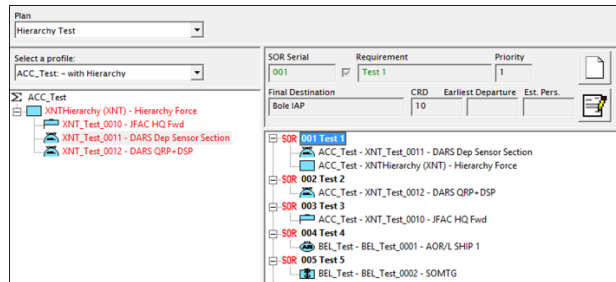
If a Force Profile & Holdings contains a hierarchy and not all the forces are allocated to the SOR in the AFL, ADAMS will not build an initial DDP from a SOR/ADL.



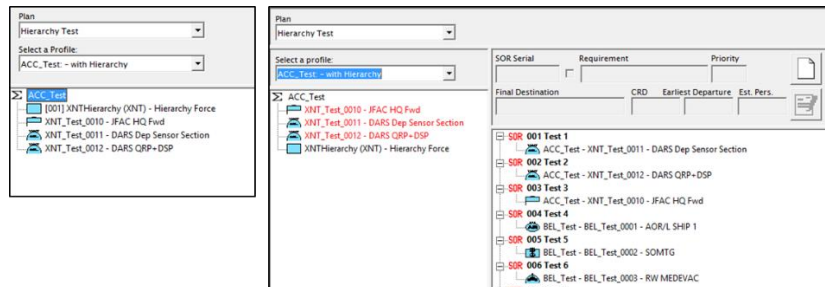


#### 4. Workaround

To be able to build a DDP all the forces should be used when building the AFL if the hierarchy remains in the Force Profile.



Alternatively, the Force Profile should be flattened and all the hierarchy should be removed in the Force Profile if it is anticipated that not all the forces will be used in the AFL when allocating the forces to the requirements in the SOR.



NCIA / SSBA / LAS  
Bldg 302, Rm 333  
Tel.: +32 (0)6544 8230