



SERVICE SUPPORT AND BUSINESS APPLICATIONS SERVICE LINE
LOGISTICS APPLICATION SERVICES

How to solve EVEWEB's "Internal Server Issue"
On Windows Server 2012

Table of contents

Document Change Log	2
General	3
Procedure	3

Document Change Log			
Version	Comments	Date	Author
1.0	Creation of document	23-OCT-2016	Simon MAUNOURY

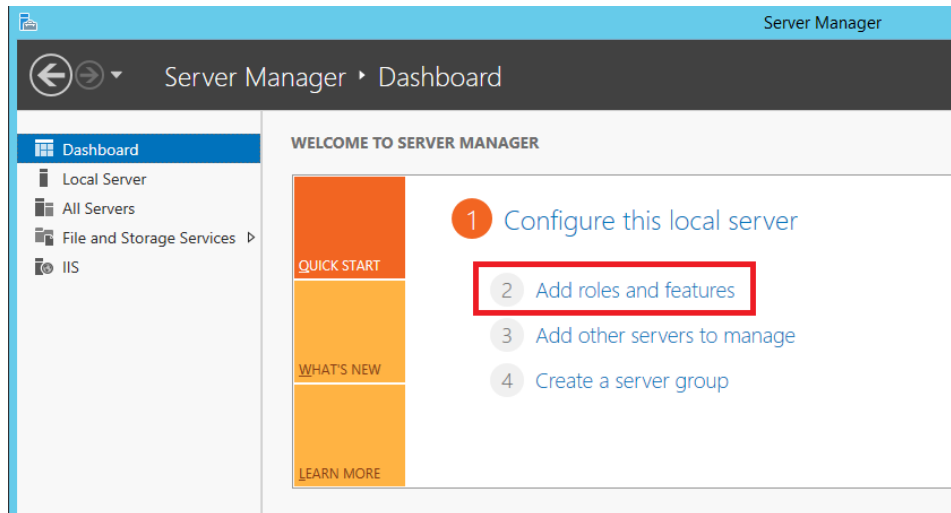
General

This document explains how to configure features on a Windows Server 2012 R2 server, in order to solve the issue of EVEWEB having an 'HTTP 500 – Internal Server Error' after the installation and configuration is over.

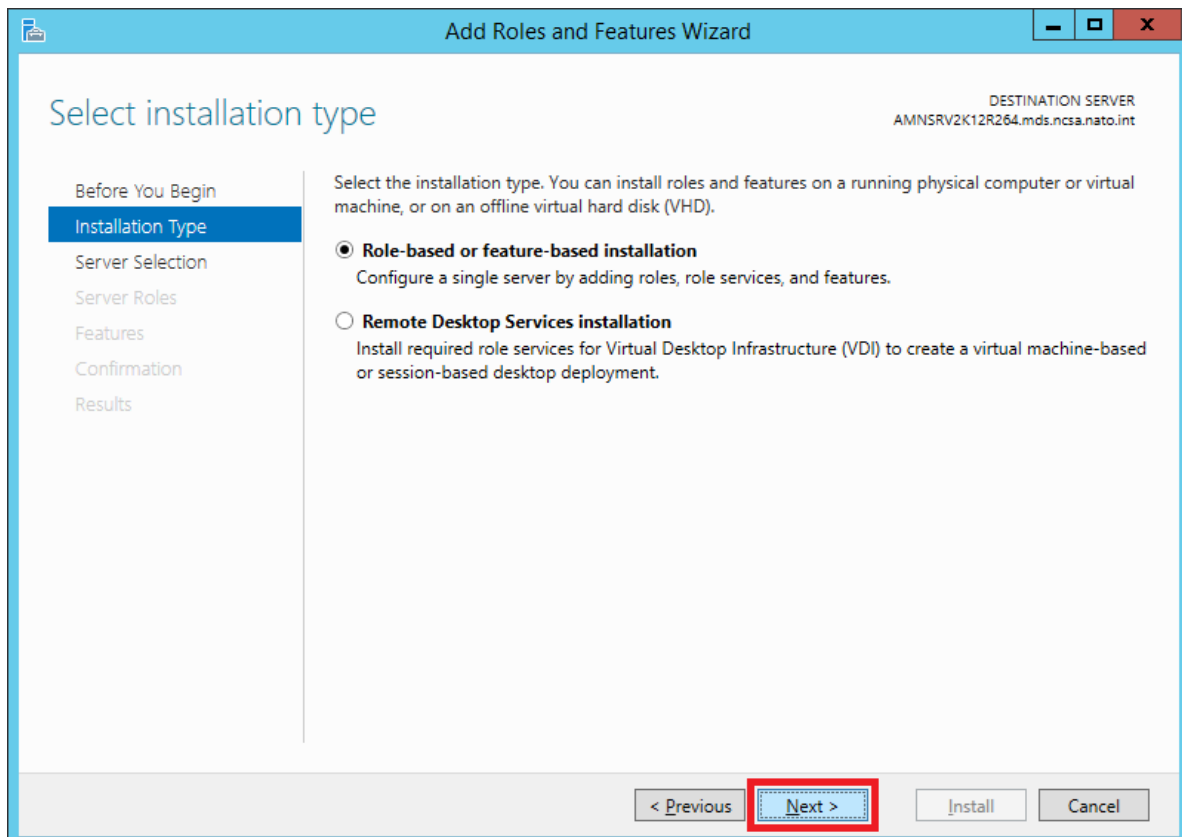
This is applicable to any version since EVEWEB 6.2.2.

Procedure

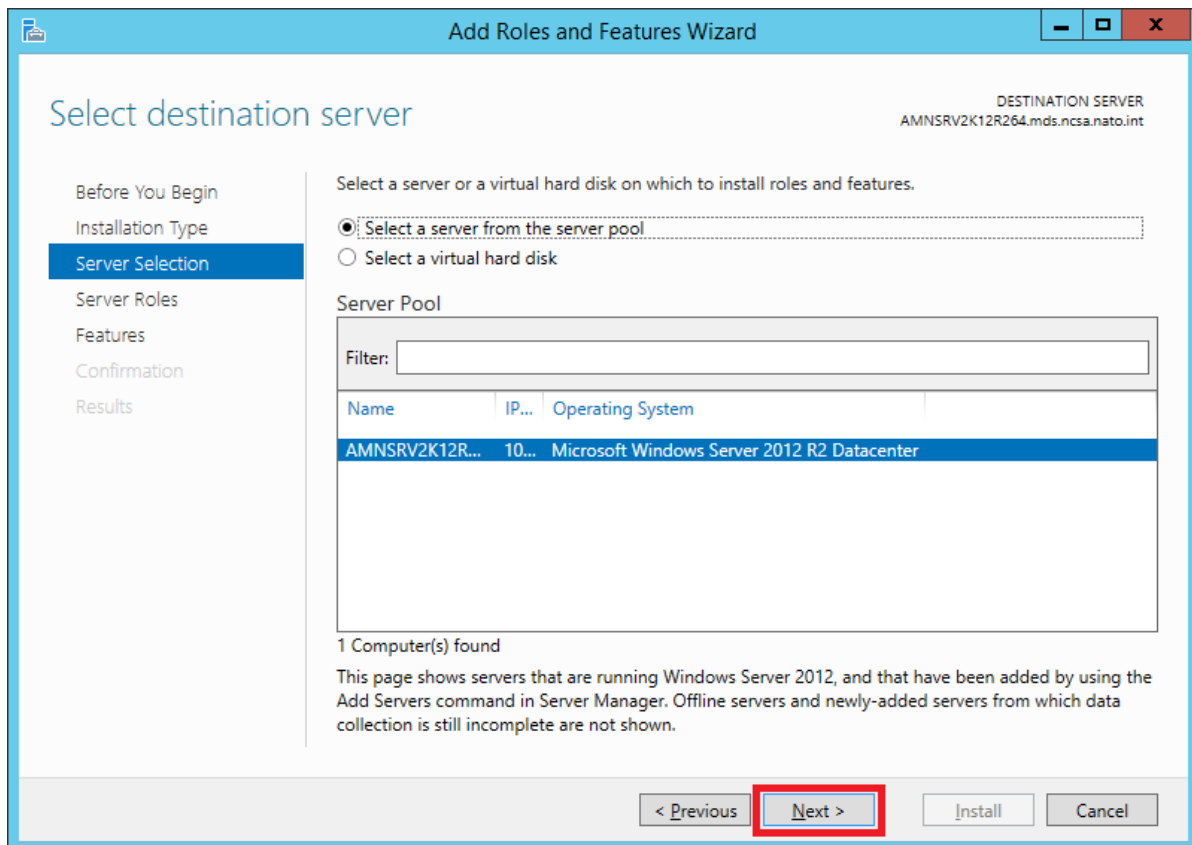
First, on the Server Manager, go to the functionality called 'Add roles and features'.



Then click 'Next' to Installation Type. Click on 'Next' again to reach the 'Server Selection' window.

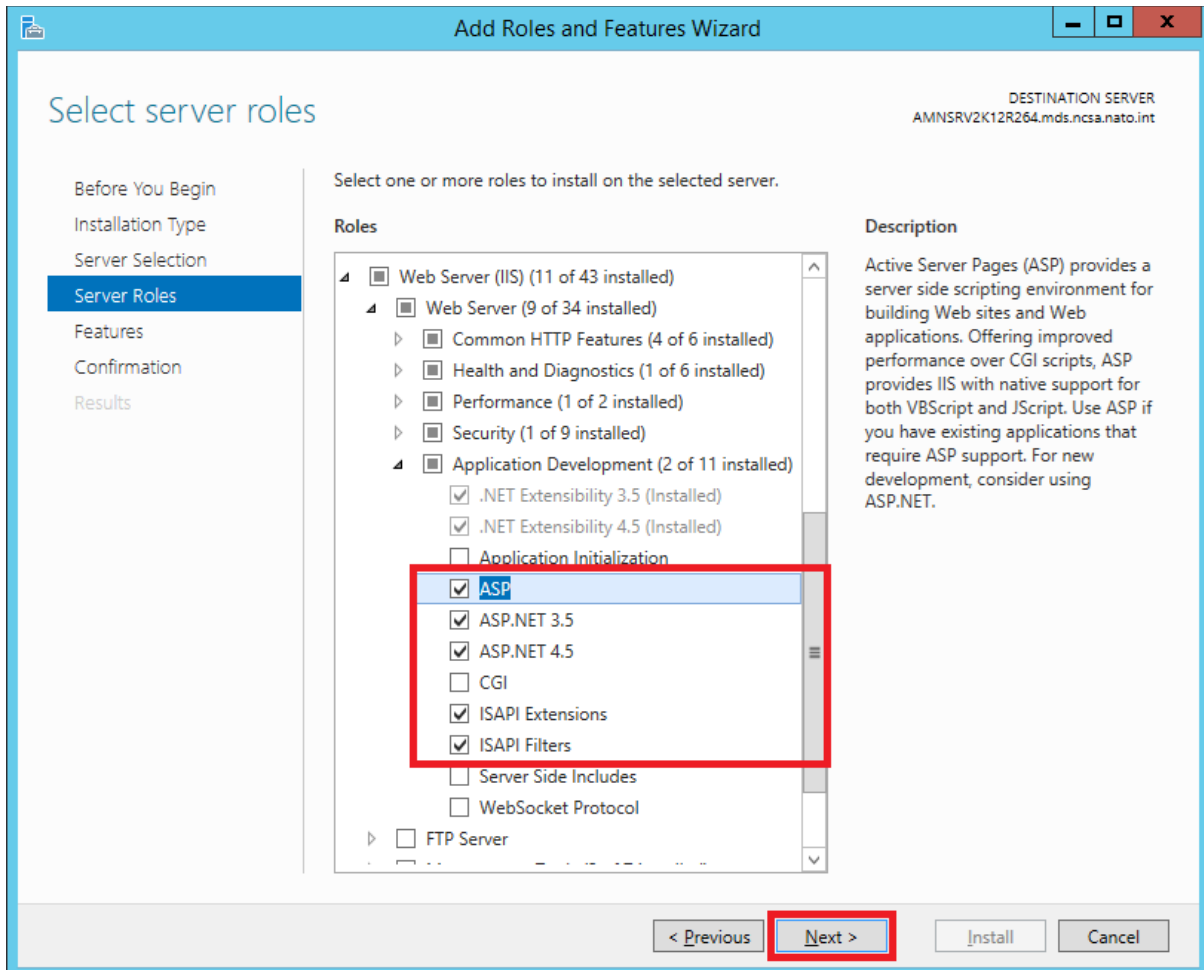


Then, after checking your server, click on 'Next'.



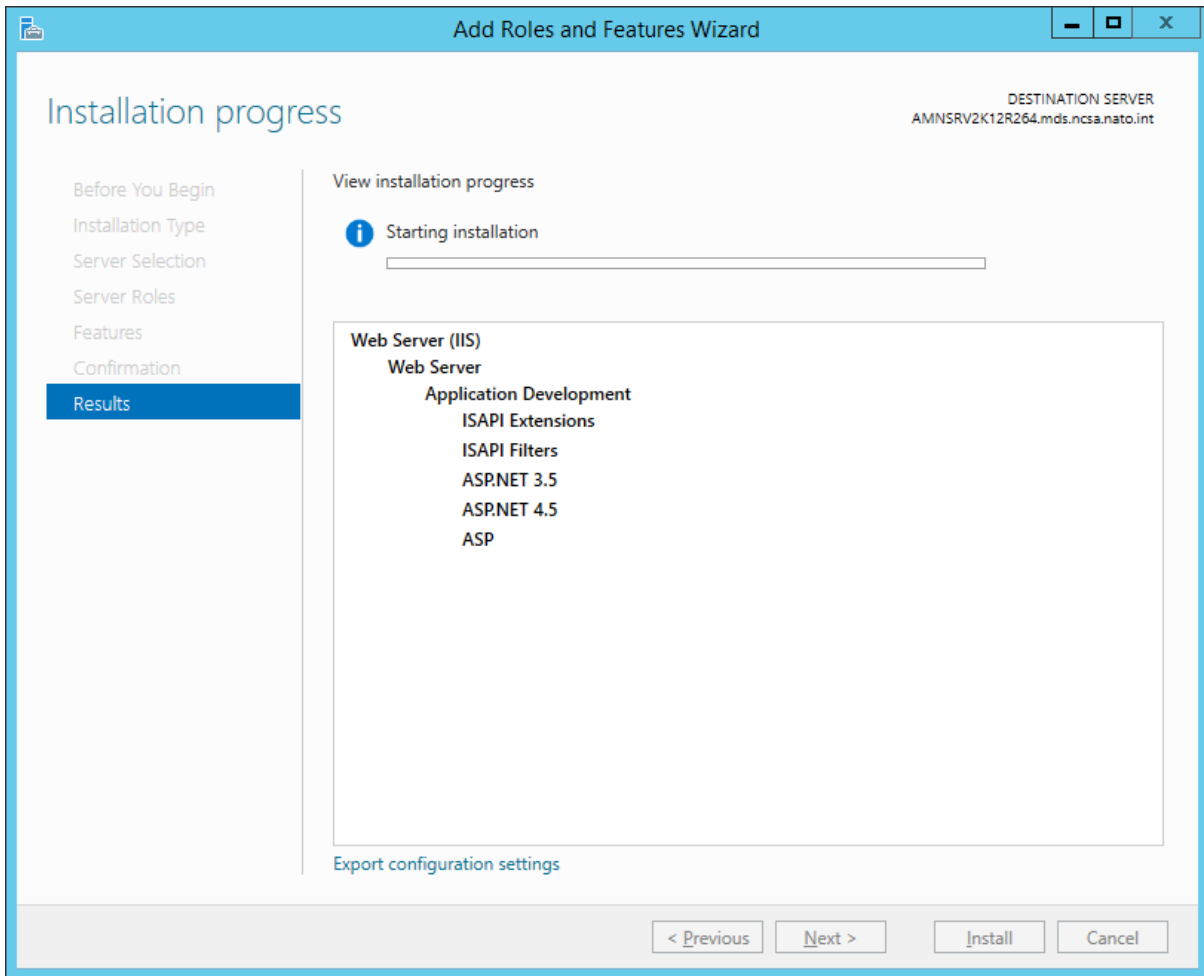
In 'Server Roles', go to 'Web Server (IIS)' node and select the following features:

- ASP
- ASP .NET 3.5
- ASP .NET 4.5
- ISAPI Extensions
- ISAPI Filters



Then click on 'Next', and again 'Next' in the 'Features' window.

Click 'Install' now on the 'Confirmation' windows, and wait for the 'Results' windows to confirm the installation of the features.



Browse again <https://localhost/EVE/> to confirm that the issue is now resolved.