



SERVICE SUPPORT AND BUSINESS APPLICATIONS SERVICE LINE
LOGISTICS APPLICATION SERVICES

LOGFAS EVE Web
Issue with GeoLocs and Routes displayed on map

Last updated: 22-NOV-2018
Applies to: LOGFAS 6.3.1.

Table of contents

Forewords3
Settings for LOGFAS EVE WEB server.....3

Document change log			
Version	Comments	Date	Author
1.0	Initial version	22-NOV-2018	Jose Ramon GARCIA VIEJO

Forewords

This document explains how to address the issue when browsing maps (“View Maps”) on the LOGFAS EVE Web portal where the objects such as GeoLocs and Routes are shown on the wrong location on the map. The required changes only affect server installations—clients workstation configuration is not affected.

The map view displays GeoLocs on a wrong location, and wrongly represents the routes as if they were connected with straight lines.

The root cause of this issue is because English was not set as the default locale culture, typically because EVE Web was not deployed on an English Windows Operating System (OS). As a consequence of this language setting, the coordinates for latitude and longitude are rounded to the full degree, resulting in objects draw on the map at the wrong location.

- The workaround proposed here updates the EVE Web configuration to run in English language mode, while the OS is unchanged.
- The server administrator needs to have granted permissions to edit/save the configuration file (web.config) in order to implement the required changes¹²
- In order to view the maps the user should be a member of the groups: “EVEWEB Users”, “EVEWEB Map Viewers”.
- For other visualization/compatibility issues related to the Internet Explorer Web browser, please, read also the Knowledge Base article:
 - 20180127 KB 2018-04_LOGFAS EVE Web and ADAMS Web Map View issue.docx

¹ Read how to customize the configuration file at the “EVE Web - Installation Manual.docx”, section “Web.config file configuration (optional)” that was supplied along with the product.

² Read how to customize the configuration file at the “EVE Web – Administration Guide.docx”, section “Configuring web.config for WMS” that was supplied along with the product.

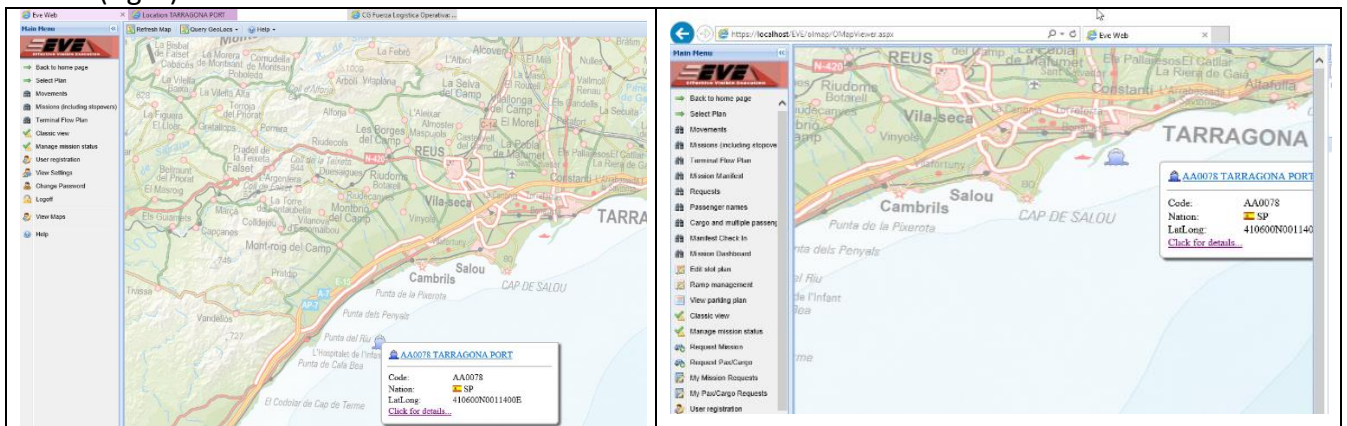
Settings for LOGFAS EVE WEB server

1. On the EVE WEB server edit the “web.config” file (see footnote 1) located by default at:
 - a. %PROGRAMFILES(x86)%\NATO\LOGFAS6\EVE Web\
2. Add the following line to the <system.web> section:


```
<configuration>
<system.web>
  <globalization uiCulture="en" culture="en-US" />
</system.web>
</configuration>
```
3. Save the EVE Web configuration file. This immediately implements the change. No IIS reset or similar is required.

Examples

The following example shows of the problem of GEOLOCs wrongly represented (left) and desired visualization (right):



The following example shows the problem for routes wrongly represented (left) and desired visualization (right):

