



SERVICE SUPPORT AND BUSINESS APPLICATIONS SERVICE LINE  
LOGISTICS APPLICATION SERVICES

## **CORSOM**

### **Runtime Exception in Animation Control**

Last updated: 30-NOV-2018  
Applies to: LOGFAS 6.3.1.

# NATO UNCLASSIFIED

## Table of contents

Document Change Log .....	2
General .....	3
1. Context	4
2. Actual Error	4
3. Consequences	4

Document Change Log			
Version	Comments	Date	Author
1.0	Creation of document	30-NOV-2018	Gonçalo F N Lopes

## General

In LOGFAS 6.3.1 and later, there is a known issue in the **CORSOM** application, related to the **Animation Control** functionality. This issue occurs when the animation bar is pushed more than 1000 days backwards, relatively to the current day.

## 1. Context

In LOGFAS 6.3.1 and later, in the **CORSOM** application, the user may load a **DDP** which contains missions that are scheduled for a time earlier than 1000 days (relatively to the current day). In that case, the **Animation Control** form will allow scrolling backwards more than 1000 days.

## 2. Actual Error

In the context described in the previous section, if the user scrolls backwards more than 1000 days, an **Error Message** form is shown, as shown in Figure 2.

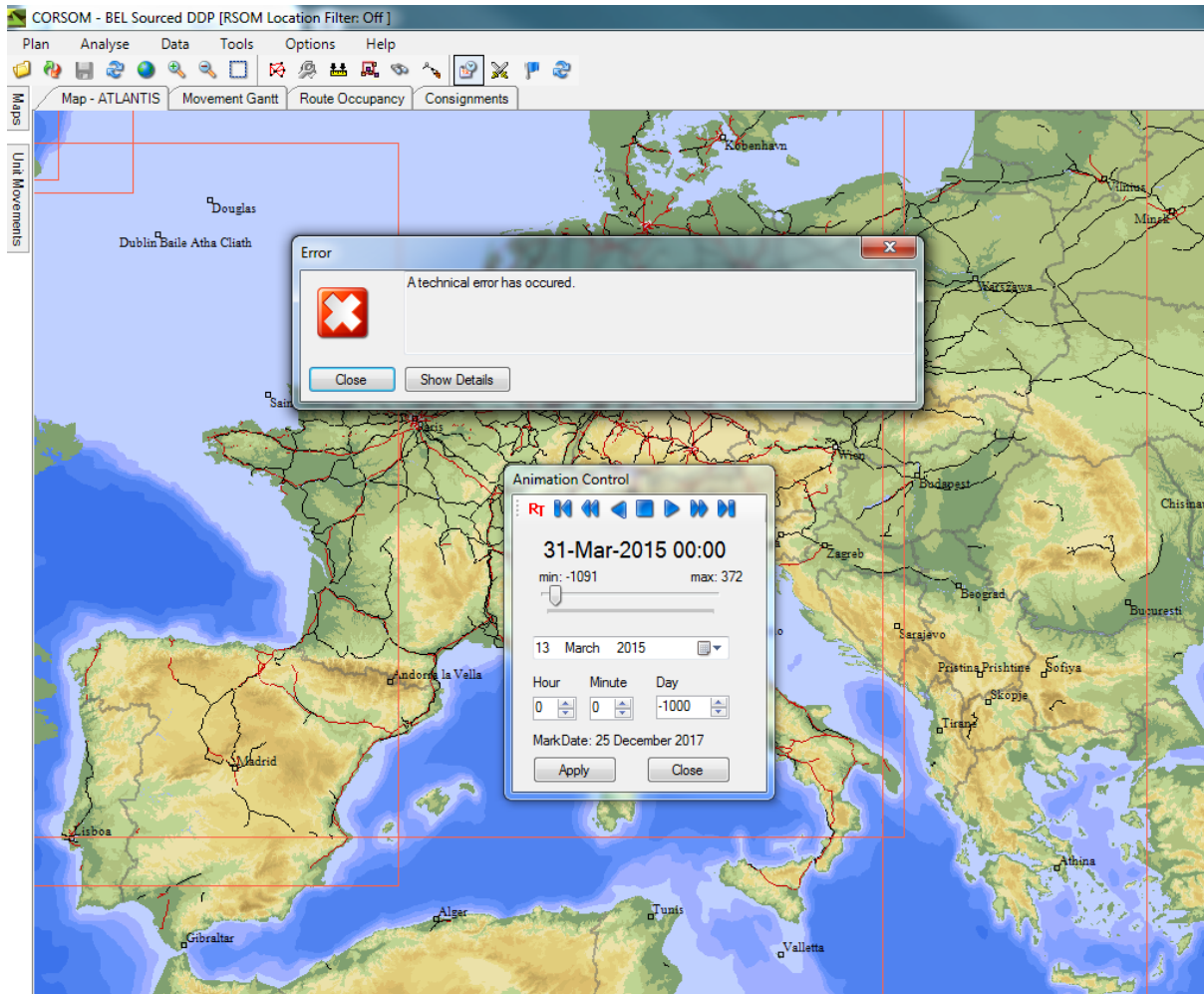


Figure 1 - Technical error window

## 3. Consequences

There are no consequences for either the user data or the application. The user should avoid going backwards more than 1000 days. In case the error occurs, the user can click **Close** at the **Error Message** form and also click **Close** on the **Animation Control** form. After that, the user can continue working on CORSOM.