



SERVICE SUPPORT AND BUSINESS APPLICATIONS SERVICE LINE
LOGISTICS APPLICATION SERVICES

EVE DATA LOADER MANUAL

Table of contents

EVE Data Loader User Guide.....	3
Prerequisites	3
EVE Data Loader as an Application.....	3
Application Configuration	4
1. Creation of the ODBC data source for EVE Data Loader.....	4
2. Configuration of EVE Data Loader Preferences	6
3. Utilisation of EVE Data Loader	7

Document change log

Version	Comments	Date	Author
0.1	Draft version of the document	28-JAN-2016	Demeter KARPAT
1.0	Formatting the document	28-JAN-2016	Simon MAUNOURY
1.1	Update for LOGFAS v6.3.0 CIAV testing	12-OCT-2017	Simon MAUNOURY

EVE Data Loader User Guide

The EVE Data Loader automatically imports data in the attachment of emails into LOGBASE, via an ODBC Data source. EVE FEP format and US SMS comma separated text file format are supported. To inform the user about an import, a notification e-mail is sent.

There are two versions of Eve Data Loader: a 'normal' application and a service. Configuration data is read from the file 'EveDataLoader.ini'. EVE can be used to create this configuration file: menu option 'File/Configure Auto Import FEP'. The configuration file must be in the same directory as the EVE Data Loader executable.

Prerequisites

In order to use properly EVE Data Loader, the following applications are required:

- MS Exchange Server on the server,
- MS Outlook on the client workstation.

EVE Data Loader has 32 bit and 64 bit executables, which are installed respectively by LOGFAS regular installer or by LOGFAS M&T 64bits.

As it should be aligned accordingly to your actual architecture, the valid combinations are as follows:

Operating System	LOGFAS installation package	ODBC	MS Outlook
32 bit	32 bit	32 bit	32 bit
64 bit	32 bit	32 bit	32 bit
64 bit	64 bit	64 bit	64 bit

EVE Data Loader as an Application

EVE Data Loader application is installed with LOGFAS package. A shortcut link is also created under MNT folder.

In order to run properly, this application needs to be run as an administrator.

Once started, this version has a notification icon on the Windows taskbar. The icon shows a database symbol with an arrow pointing towards it. The colour of this arrow depends of the status.

<u>Colour</u>	<u>Status</u>
Red	During initialisation and when initialisation fails.
Green	After correct initialisation; program is idle.
Blue	After correct initialisation; import is in progress.

Common failure reasons can be a missing configuration file or incorrect configuration data. The icon shows a text balloon with an (error) message when you hover the mouse above it.

Application Configuration

EVE Data Loader should be configured in order to consume the data in email attachments and write it into LOGBASE through an ODBC data source.

1. Creation of the ODBC data source for EVE Data Loader

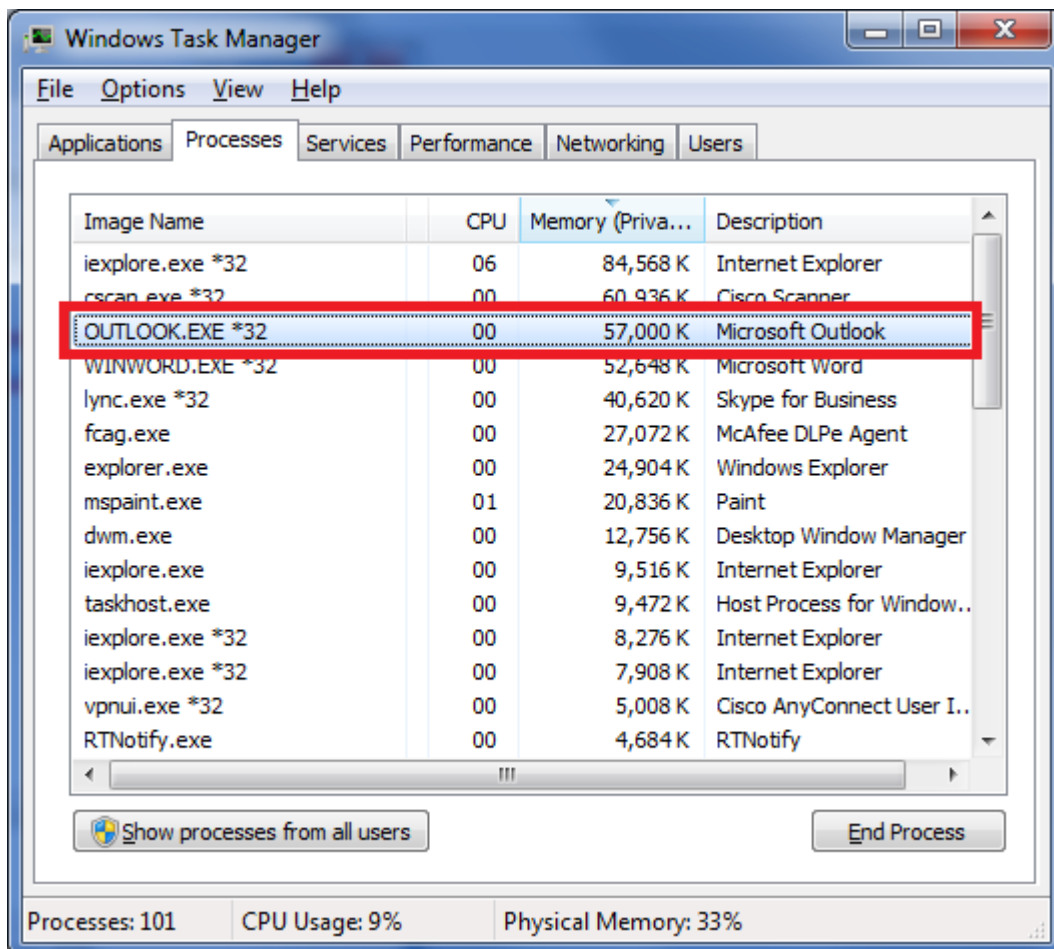
First, create a folder in the inbox of your Outlook profile and give it a meaningful name, like "SMS_Inbox".

In Windows Explorer, create a folder where temporary files can be saved, like "C:\Temp\SMS_Files"

You should then start to create the actual ODBC data source you want to use with EVE Data Loader in the 'ODBC Data Source Administrator'.

You need to open the ODBC Data Source Administrator as an administrator, according to the version of Outlook used for your configuration.

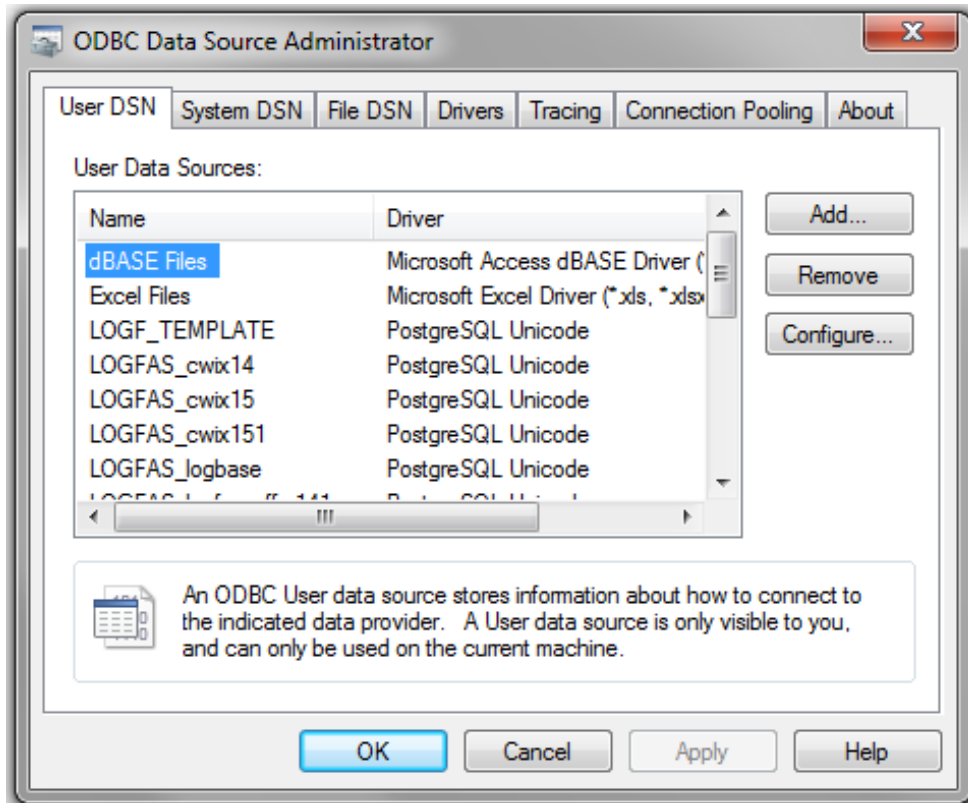
Check in task manager if the 32 or 64 bit version of MS Office is installed (For instance below, it's the 32 bit version).



NATO UNCLASSIFIED

If you have 64 bits, you would need to install M&T 64 bit version of LOGFAS, which can be found under additional components on the LOGFAS installation's DVD.

Open the 32 bit (C:\Windows\SysWow64\odbcad32.exe) or 64 bit (C:\Windows\System32\odbcad32.exe) ODBC data source administrator depending on which office version is installed.

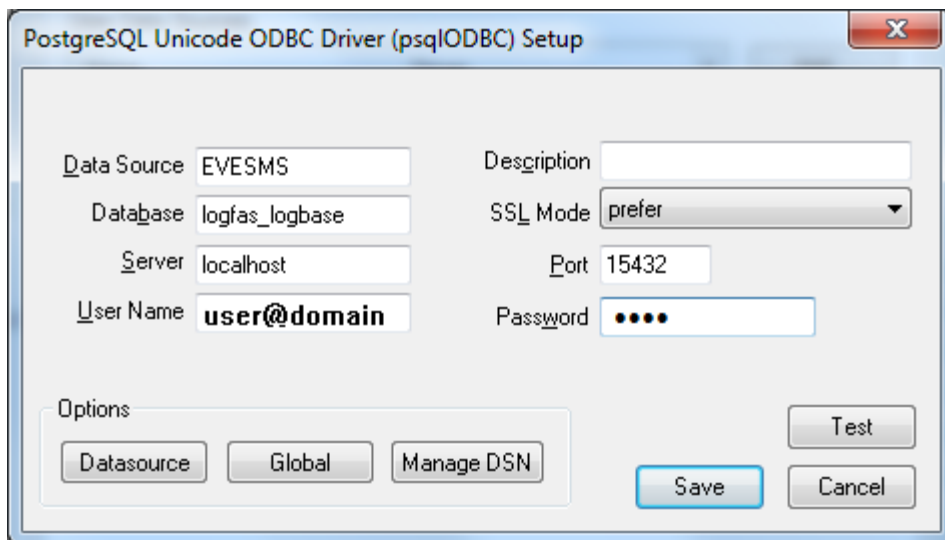


Create the ODBC data source by clicking on "Add...", and select 'PostgreSQL Unicode driver' or 'PostgreSQL Unicode(x64) driver' in the list and click 'Finish'.

Then, enter the following settings (example on the next page):

- Data Source: EVESMS
 - Database: logfas_logbase or any database
 - Server: localhost or the IP address of the server
 - SSL Mode: prefer
 - Port: 15432
 - Username:
 - On a localhost database, you can select 'postgres', and if you don't have the password for this user, the pg_hba.conf file needs to be changed to 'trust' authentication (instead of 'md5' or 'password').
 - On a remote server, the SSPI configuration needs to be enabled (see 'LOGFAS 6.3.0 – Upgrading manual.docx'), so the username should be in the format 'user@domain'.
- Important:** The user needs to exist in the database, so it is required to first open any LOGFAS application like EVE with the desired user and connect to the remote database once.
- Password does not matter (unless you do not have configured the 'pg_hba.conf' file on your WorkStation or Server and have typed the password during the server installation yourself).

NATO UNCLASSIFIED



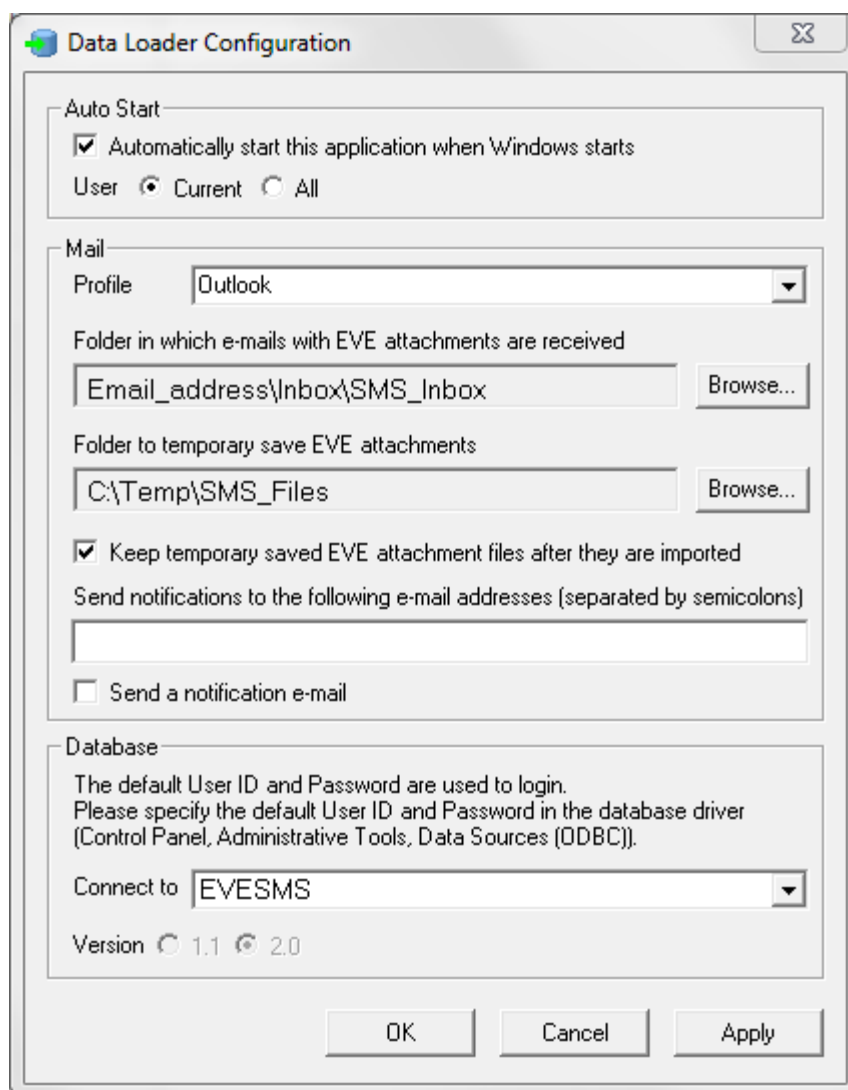
Example of setup for the PostgreSQL ODBC driver

Finally, click 'Test' and the connection should be successful, then click 'Save'.

2. Configuration of EVE Data Loader Preferences

Important: To make any configuration changes in EVE data loader, you would have to run it first as an administrator. Once configured, EVE Data Loader can be executed later with normal user privileges.

1. If EVE Data Loader is already running, right click the icon in the taskbar and select 'Exit'.
2. Open EVE Data Loader as an administrator (unless it was already configured, you will get an error message about an incorrect folder).
3. Double click the EVE Data Loader icon in the taskbar or right-click on it and select "Preferences..." to enter the configuration screen (see example on the next page):
 - Select the mail profile (exchange server or outlook) from the dropdown.
 - Click on the first browse button and select the outlook folder created earlier (in our example: Inbox\SMS_Inbox).
 - Click on the second browse button and select the windows folder created earlier (in our example: "C:\Temp\SMS_Files").
 - Don't tick any of the checkboxes unless you want to receive notification messages:
In that case, you need to provide an E-Mail address where messages will be sent.
4. In the "Connect To" dropdown list, select the ODBC datasource created above.
5. Click OK or Apply on the Configuration window.



Example of EVE Data Loader Configuration

6. The arrow in EVE Data Loader's icon in the taskbar should now have changed from red to green.

3. Utilisation of EVE Data Loader

The usage of EVE data loader should be straight forward after the configuration is done:

You only need to receive an E-Mail with a US SMS file attached in your Inbox.
 Drag the E-Mail to the SMS Inbox folder which have been created in section 1.

Important: The E-Mail needs to be unread to be taken in account by EVE Data Loader, so please mark it as unread if it's not.

The icon of EVE data loader will eventually turn blue (while importing the file), and revert to green again when the import is over.

Subsequently, the SMS data is now imported into the DB and the message is marked as read in Outlook.